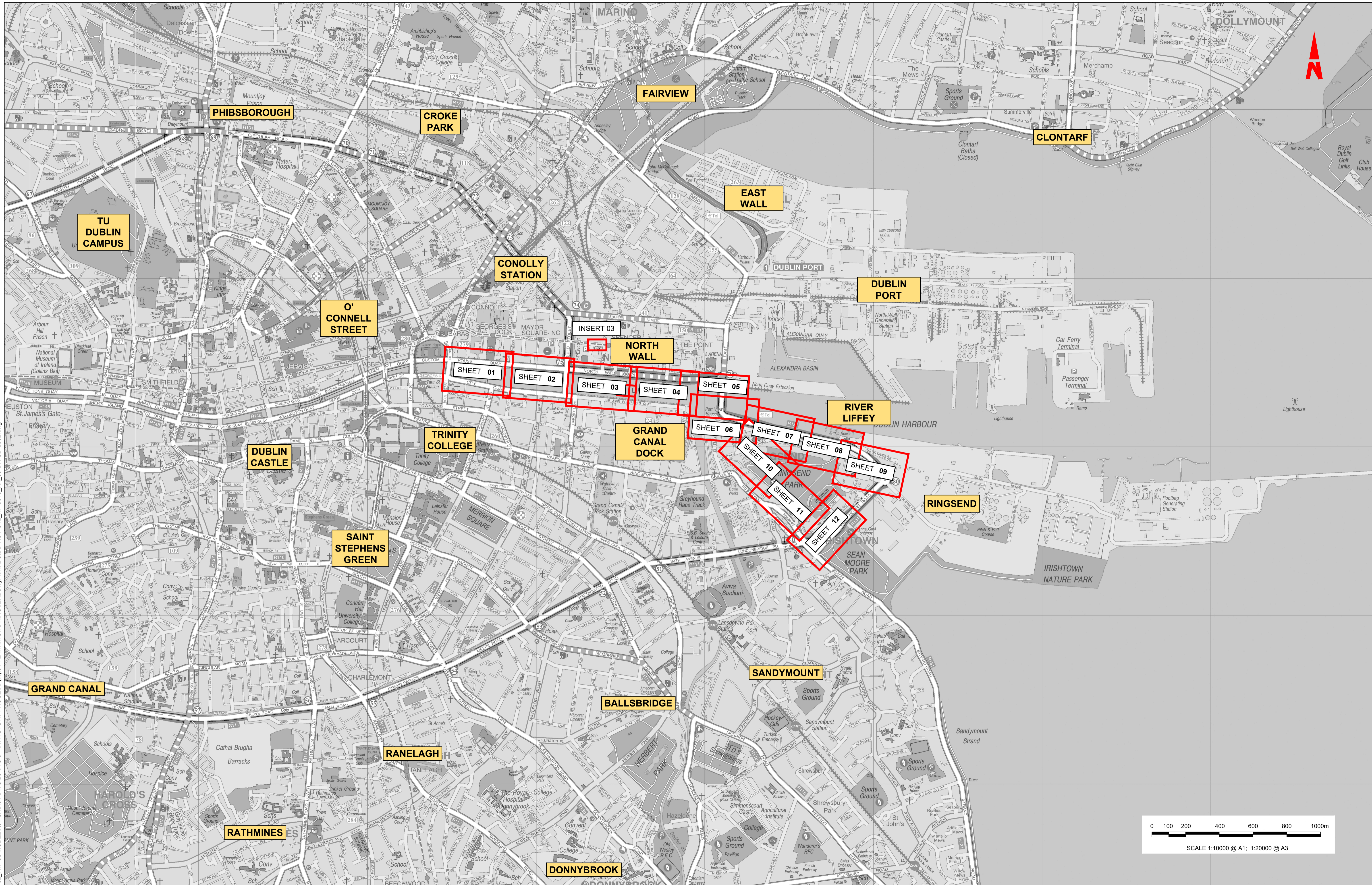


**Appendix B12**  
IW Foul Sewer Asset  
Alterations









W:\000000\19171171-02\_WIP\08 MODELS\01 CAD\01 PLANNING\16 RINGSEND\KEY\Plans\BCIDD-ROT-UTL\_KP-0016\_XX\_00-DR-CD-0002.dwg  
 W:\000000\19171171-02\_WIP\08 MODELS\01 CAD\01 PLANNING\16 RINGSEND\KEY\Plans\BCIDD-ROT-UTL\_KP-0016\_XX\_00-DR-CD-0002.dwg

Disclaimer  
 a. © National Transport Authority (NTA) 2022. This drawing is confidential and the copyright in it is owned by NTA. This drawing must not be either loaned, copied or otherwise reproduced in whole or in part or used for any purpose without the prior permission of NTA.  
 b. This drawing is to be used for the design element identified in the titleblock. Other information shown is to be considered indicative only. The drawing is to be read in conjunction with all other relevant design drawings.  
 c. O.S. data used for plans are printed under © Ordnance Survey Ireland Government of Ireland. All rights reserved. Licence Number 2022/OSI\_NMA\_180 National Transport Authority. All elevations are in metres and relate to OSi Geoid Model (OSGM15) Mean Head. All Co-ordinates are in Irish

Transverse Mercator Grid (ITM) as defined by OSI active local GPS station.  
 d. Information concerning the position of apparatus shown on this drawing is based on the information supplied by the utility owners, agents and/or the utility works contractor, whilst every care has been taken in the preparation of this drawing, positions should be taken as approximate and are provided for general guidance only and no representation is made by the NTA as to the accuracy, completeness, sufficiency or otherwise of this information. The information contained herein does not purport to be comprehensive or final as the apparatus is subject to being altered and/or superseded. Recipients should not rely on this information. Any liabilities are hereby expressly disclaimed.

The information contained herein has been provided by the NTA but does not purport to be comprehensive or final. Recipients should not rely on the information. Neither the NTA nor any of its directors, officers, employees, agents, stakeholders or advisers make any representation or warranty as to, or accept any liability or responsibility in relation to, the adequacy, accuracy, reasonableness or completeness of the information provided as part of this document or any matter on which the information is based (including but not limited to loss or damage arising as a result of reliance by recipients on the information or any part of it). Any liabilities are hereby expressly disclaimed.

Project Ireland 2040  
 Building Ireland's Future

Rev	Date	Drn	Chk'd	App'd	Description
M01	MAR 2023	DS	EOC	SMG	ISSUE FOR PHASE 4: PLANNING

Client  
**NTA**  
 Údarás Náisiúnta Iompair  
 National Transport Authority

Engineering Designer  
**CIROD**  
 TYPSA

Date  
 MAR 2023

Scale  
 1:10,000 @ A1  
 1:20,000 @ A3

Drawn  
 DS

Checked  
 EOC

Approved  
 SMG

Programme Code  
 BCIDD

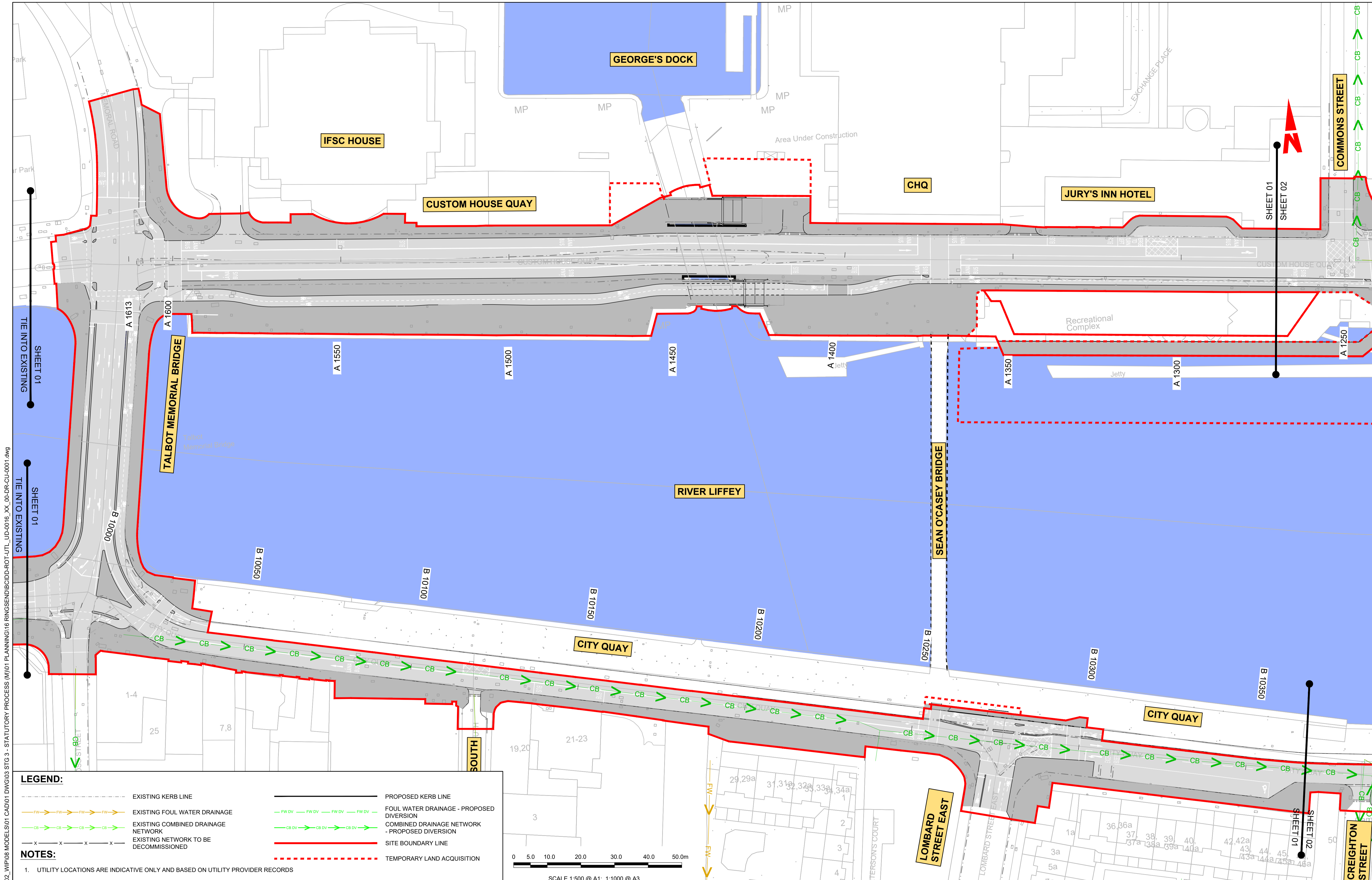
Originator Code  
 ROT

QMS Code

Programme Title		Drawing Title		Drawing File Name		Sheet Number		Status		Rev	
BUSCONNECTS DUBLIN CORE BUS CORRIDORS INFRASTRUCTURE WORKS		RINGSEND TO CITY CENTRE CORE BUS CORRIDOR SCHEME IW FOUL SEWER ASSET ALTERNATIONS KEYPLAN		BCIDD-ROT-UTL_KP-0016_XX_00-DR-CD-0002		01 of 01		A		M01	

DO NOT SCALE USE FIGURED DIMENSIONS ONLY



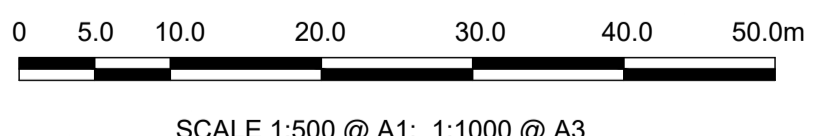


**LEGEND:**

	EXISTING KERB LINE		PROPOSED KERB LINE
	EXISTING FOUL WATER DRAINAGE		FOUL WATER DRAINAGE - PROPOSED DIVERSION
	EXISTING COMBINED DRAINAGE NETWORK		COMBINED DRAINAGE NETWORK - PROPOSED DIVERSION
	EXISTING NETWORK TO BE DECOMMISSIONED		SITE BOUNDARY LINE
			TEMPORARY LAND ACQUISITION

**NOTES:**

- UTILITY LOCATIONS ARE INDICATIVE ONLY AND BASED ON UTILITY PROVIDER RECORDS



**Disclaimer:**

a. © National Transport Authority (NTA) 2022. This drawing is confidential and the copyright in it is owned by NTA. This drawing must not be either loaned, copied or otherwise reproduced in whole or in part or used for any purpose without the prior permission of NTA.

b. This drawing is to be used for the design element identified in the titleblock. Other information shown is to be considered indicative only. The drawing is to be read in conjunction with all other relevant design drawings.

c. O.S. data used for plans are printed under © Ordnance Survey Ireland Government of Ireland. All rights reserved. Licence Number 2022/OSI\_NMA\_180 National Transport Authority. All elevations are in metres and relate to OSI Geoid Model (OSGM15) Mean Head. All Co-ordinates are in Irish Transverse Mercator Grid (ITM) as defined by OSI active local GPS station.

d. Information concerning the position of apparatus shown on this drawing is based on drawings supplied by the utility owners and/or the utility works contractor, whilst every care has been taken in the preparation of this drawing, positions should be taken as approximate and are intended for general guidance only and no representation is made by the NTA as to the accuracy, completeness, sufficiency or otherwise of this drawing and the position of the apparatus. The information contained herein does not purport to be comprehensive or final as the apparatus is subject to being altered and/or superseded. Recipients should not rely on this information. Any liabilities are hereby expressly disclaimed.



Rev	Date	Drm	Chk'd	App'd	Description
M01	MAR 2023	DS	EOC	SMG	ISSUE FOR PHASE 4: PLANNING

Client: **NTA**  
Údarás Náisiúnta Iompair  
National Transport Authority

Engineering Designer: **CIROD**  
TYPSA

Date: MAR 2023 | Scale: 1:500 @ A1, 1:1000 @ A3 | Drawn: DS | Checked: EOC | Approved: SMG

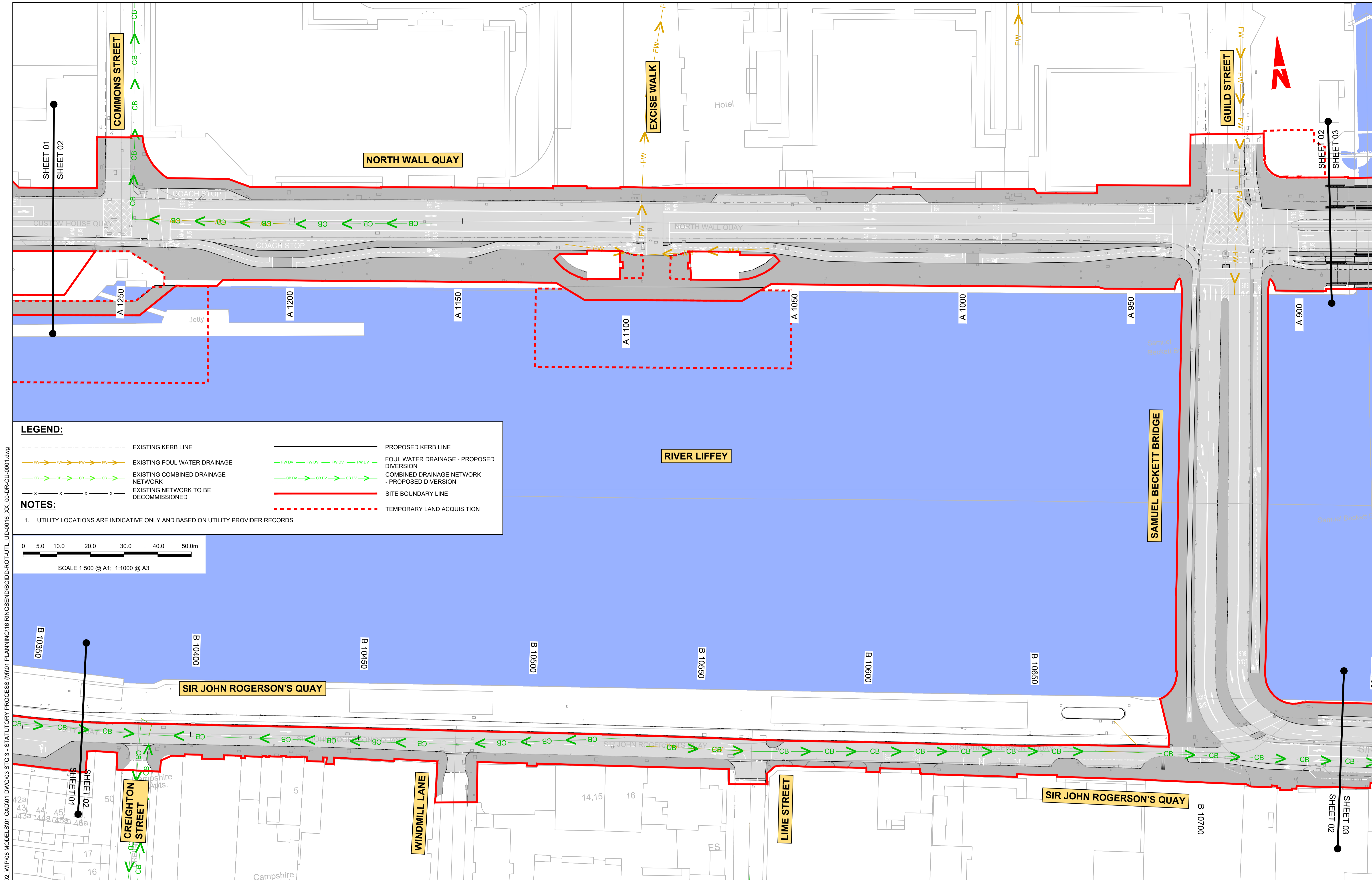
Programme Code: BCIDD | Originator Code: ROT | QMS Code:

Programme Title: <b>BUSCONNECTS DUBLIN CORE BUS CORRIDORS INFRASTRUCTURE WORKS</b>			
Drawing Title: RINGSEND TO CITY CENTRE CORE BUS CORRIDOR SCHEME IW FOUL SEWER ASSET ALTERATIONS			
Drawing File Name: BCIDD-ROT-UTL_UD-0016_XX_00-DR-CU-0001	Sheet Number: 01 of 12	Status: A	Rev: M01

DO NOT SCALE USE FIGURED DIMENSIONS ONLY

\\woodhup1\j2019\1917\17-02\_WIP\08 MODELS\01 CAD\01 PLANNING\16 RINGSEND\BCIDD-ROT-UTL\_UD-0016\_XX\_00-DR-CU-0001.dwg



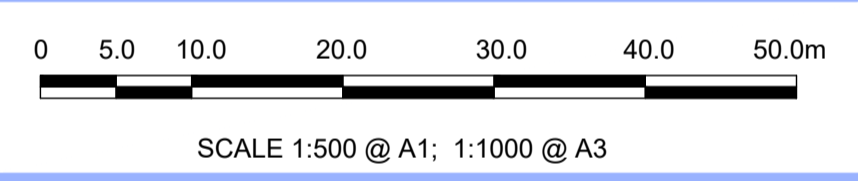


**LEGEND:**

	EXISTING KERB LINE		PROPOSED KERB LINE
	EXISTING FOUL WATER DRAINAGE		FOUL WATER DRAINAGE - PROPOSED DIVERSION
	EXISTING COMBINED DRAINAGE NETWORK		COMBINED DRAINAGE NETWORK - PROPOSED DIVERSION
	EXISTING NETWORK TO BE DECOMMISSIONED		SITE BOUNDARY LINE
			TEMPORARY LAND ACQUISITION

**NOTES:**

- UTILITY LOCATIONS ARE INDICATIVE ONLY AND BASED ON UTILITY PROVIDER RECORDS

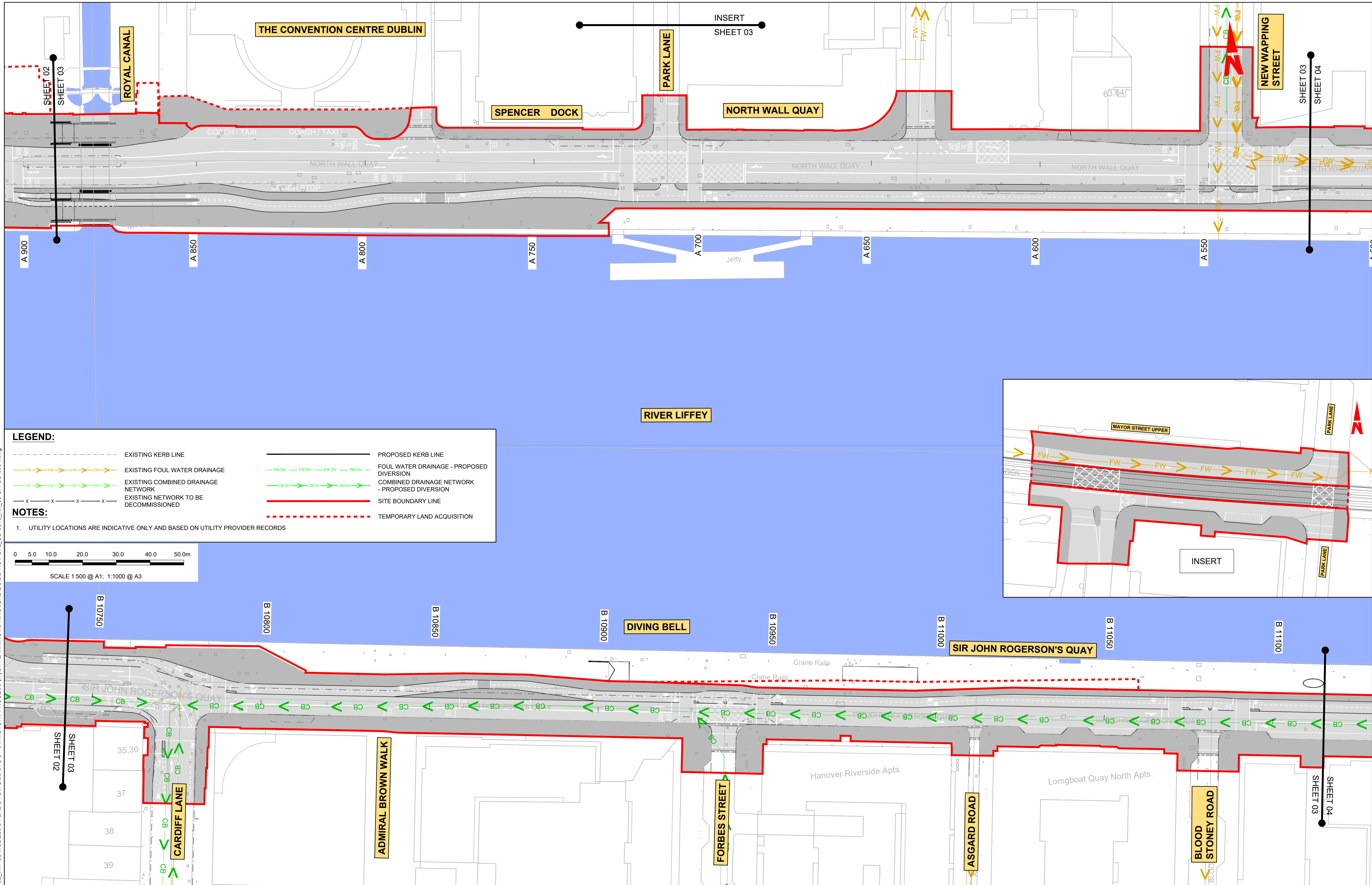


\\nodubp1u2019117117-02\_WIP08 MODELS01 CAD01 DWG03 STG 3 - STATUTORY PROCESS (M)01 PLANNING16 RINGSEND/BCIDD-ROT-UTL\_UD-0016\_XX\_00-DR-CU-0001.dwg

<p><b>Disclaimer</b></p> <p>a. © National Transport Authority (NTA) 2022. This drawing is confidential and the copyright in it is owned by NTA. This drawing must not be either loaned, copied or otherwise reproduced in whole or in part or used for any purpose without the prior permission of NTA.</p> <p>b. This drawing is to be used for the design element identified in the titleblock. Other information shown is to be considered indicative only. The drawing is to be read in conjunction with all other relevant design drawings.</p> <p>c. O.S. data used for plans are printed under © Ordnance Survey Ireland Government of Ireland. All rights reserved. Licence Number 2022/OSI_NMA_180 National Transport Authority. All elevations are in metres and relate to OSI Geoid Model (OSGM15) Mean Head. All Co-ordinates are in Irish Transverse Mercator Grid (ITM) as defined by OSI active local GPS station.</p> <p>d. Information concerning the position of apparatus shown on this drawing is based on drawings supplied by the utility owners and/or the utility works contractor, whilst every care has been taken in the preparation of this drawing, positions should be taken as approximate and are intended for general guidance only and no representation is made by the NTA as to the accuracy, completeness, sufficiency or otherwise of this drawing and the position of the apparatus. The information contained herein does not purport to be comprehensive or final as to, or accept any liability or responsibility in relation to, the adequacy, accuracy, reasonableness or completeness of the information provided as part of this document or any matter on which the information is based (including but not limited to loss or damage arising as a result of reliance by recipients on the information or any part of it). Any liabilities are hereby expressly disclaimed.</p>		<p>Rev M01 Date MAR 2023 Dm DS Chk'd EOC App'd SMG Description ISSUE FOR PHASE 4: PLANNING</p>		<p>Client <b>NTA</b> Údarás Náisiúnta Iompair National Transport Authority</p>		<p>Engineering Designer <b>CIROD</b> TYPSA</p>			<p>Programme Title <b>BUSCONNECTS DUBLIN</b> <b>CORE BUS CORRIDORS INFRASTRUCTURE WORKS</b></p>			
<p>Date MAR 2023 Scale 1:500 @ A1 1:1000 @ A3</p>		<p>Drawn DS Checked EOC Approved SMG</p>		<p>Programme Code BCIDD Originator Code ROT QMS Code</p>		<p>Drawing Title RINGSEND TO CITY CENTRE CORE BUS CORRIDOR SCHEME IW FOUL SEWER ASSET ALTERATIONS</p>						
<p>Drawing File Name BCIDD-ROT-UTL_UD-0016_XX_00-DR-CU-0002</p>		<p>Sheet Number 02 of 12</p>		<p>Status A</p>		<p>Rev M01</p>						

DO NOT SCALE USE FIGURED DIMENSIONS ONLY



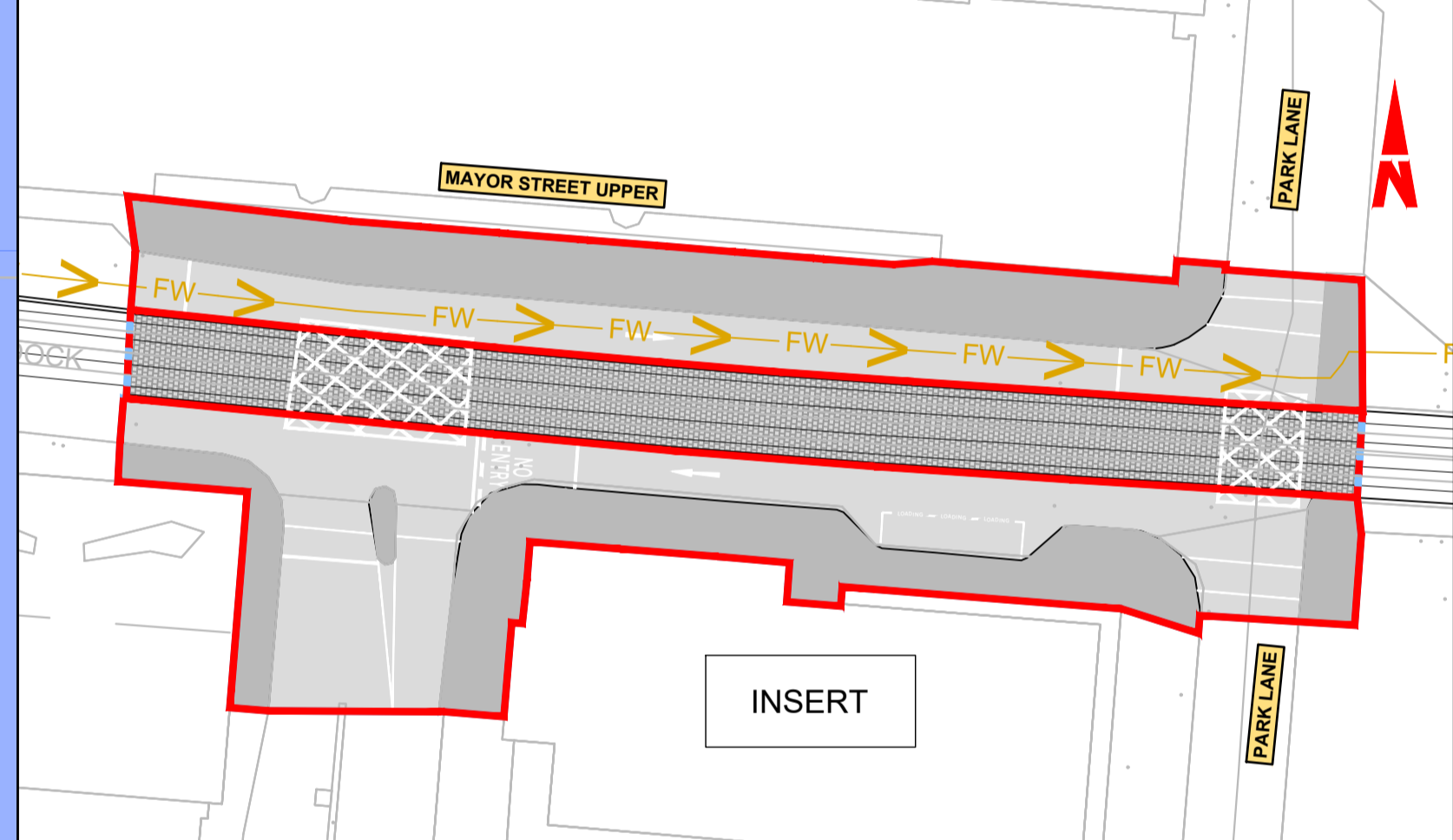
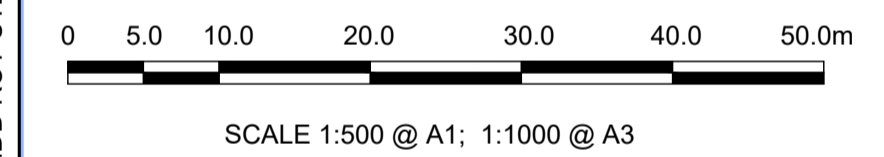


**LEGEND:**

- EXISTING KERB LINE
- PROPOSED KERB LINE
- FW EXISTING FOUL WATER DRAINAGE
- FW DV FOUL WATER DRAINAGE - PROPOSED DIVERSION
- CB EXISTING COMBINED DRAINAGE NETWORK
- CB DV COMBINED DRAINAGE NETWORK - PROPOSED DIVERSION
- X EXISTING NETWORK TO BE DECOMMISSIONED
- SITE BOUNDARY LINE
- TEMPORARY LAND ACQUISITION

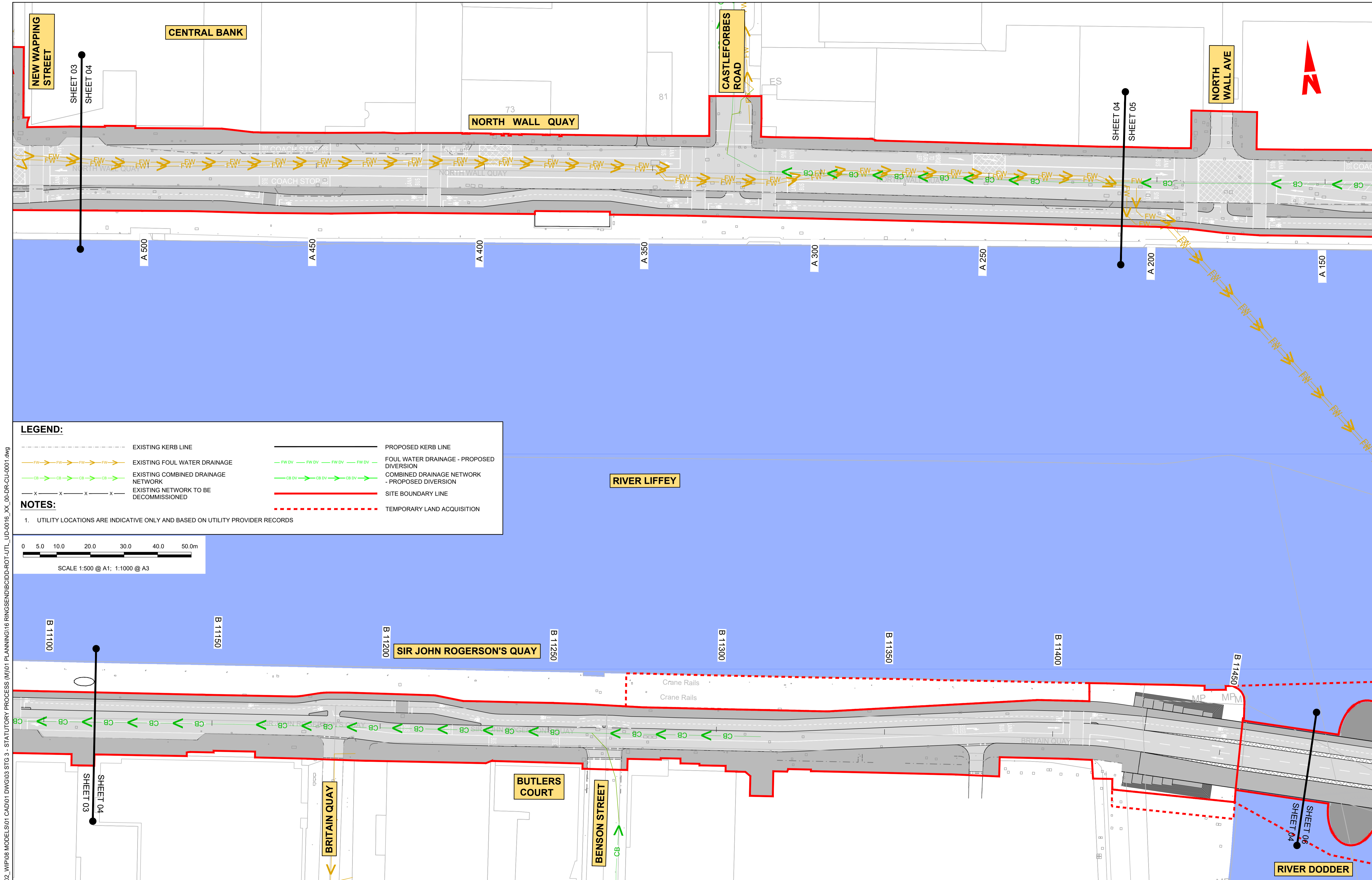
**NOTES:**

- UTILITY LOCATIONS ARE INDICATIVE ONLY AND BASED ON UTILITY PROVIDER RECORDS



<p><b>Disclaimer:</b></p> <p>a. © National Transport Authority (NTA) 2022. This drawing is confidential and the copyright in it is owned by NTA. This drawing must not be either loaned, copied or otherwise reproduced in whole or in part or used for any purpose without the prior permission of NTA.</p> <p>b. This drawing is to be used for the design element identified in the titlebox. Other information shown is to be considered indicative only. The drawing is to be read in conjunction with all other relevant design drawings.</p> <p>c. O.S. data used for plans are printed under © Ordnance Survey Ireland Government of Ireland. All rights reserved. Licence Number 2022/OSI_NMA_180 National Transport Authority. All elevations are in metres and relate to OSI Geoid Model (OSGM15) Mean Head. All Co-ordinates are in Irish Transverse Mercator Grid (ITM) as defined by OSI active local GPS station.</p> <p>d. Information concerning the position of apparatus shown on this drawing is based on drawings supplied by the utility owners and/or the utility works contractor, whilst every care has been taken in the preparation of this drawing, positions should be taken as approximate and are intended for general guidance only and no representation is made by the NTA as to the accuracy, completeness, sufficiency or otherwise of this information. The information contained herein does not purport to be comprehensive or final as the apparatus is subject to being altered and/or superceded. Recipients should not rely on this information. Any liabilities are hereby expressly disclaimed.</p> <p>e. The information contained herein has been provided by the NTA but does not purport to be comprehensive or final. Recipients should not rely on the information. Neither the NTA nor any of its directors, officers, employees, agents, stakeholders or advisers make any representation or warranty as to, or accept any liability or responsibility in relation to, the adequacy, accuracy, reasonableness or completeness of the information provided as part of this document or any matter on which the information is based (including but not limited to loss or damage arising as a result of reliance by recipients on the information or any part of it). Any liabilities are hereby expressly disclaimed.</p>		<p>Rev M01 Date MAR 2023 Dm DS Chk'd EOC App'd SMG Description ISSUE FOR PHASE 4: PLANNING</p>		<p>Client <b>NTA</b> Údarás Náisiúnta Iompair National Transport Authority</p>		<p>Engineering Designer <b>CIROD</b> TYPSA</p>			<p>Programme Title <b>BUSCONNECTS DUBLIN</b> <b>CORE BUS CORRIDORS INFRASTRUCTURE WORKS</b></p>		
<p>Date MAR 2023 Scale 1:500 @ A1 1:1000 @ A3</p>		<p>Drawn DS Checked EOC Approved SMG</p>		<p>Date MAR 2023 Scale 1:500 @ A1 1:1000 @ A3</p>		<p>Programme Code BCIDD Originator Code ROT QMS Code</p>			<p>Drawing Title RINGSEND TO CITY CENTRE CORE BUS CORRIDOR SCHEME IW FOUL SEWER ASSET ALTERATIONS</p>		
<p>Project Ireland 2040 Building Ireland's Future</p>		<p>Drawing File Name BCIDD-ROT-UTL_UD-0016_XX_00-DR-CU-0003</p>		<p>Sheet Number 03 of 12</p>		<p>Status A</p>		<p>Rev M01</p>		<p>DO NOT SCALE USE FIGURED DIMENSIONS ONLY</p>	



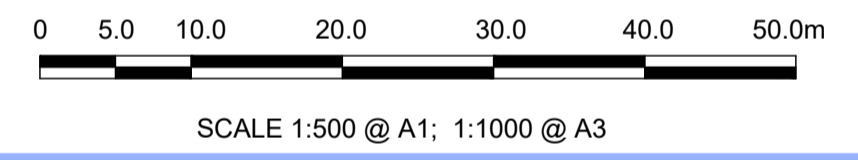


**LEGEND:**

- EXISTING KERB LINE
- PROPOSED KERB LINE
- EXISTING FOUL WATER DRAINAGE
- FOUL WATER DRAINAGE - PROPOSED DIVERSION
- EXISTING COMBINED DRAINAGE NETWORK
- COMBINED DRAINAGE NETWORK - PROPOSED DIVERSION
- EXISTING NETWORK TO BE DECOMMISSIONED
- SITE BOUNDARY LINE
- TEMPORARY LAND ACQUISITION

**NOTES:**

- UTILITY LOCATIONS ARE INDICATIVE ONLY AND BASED ON UTILITY PROVIDER RECORDS

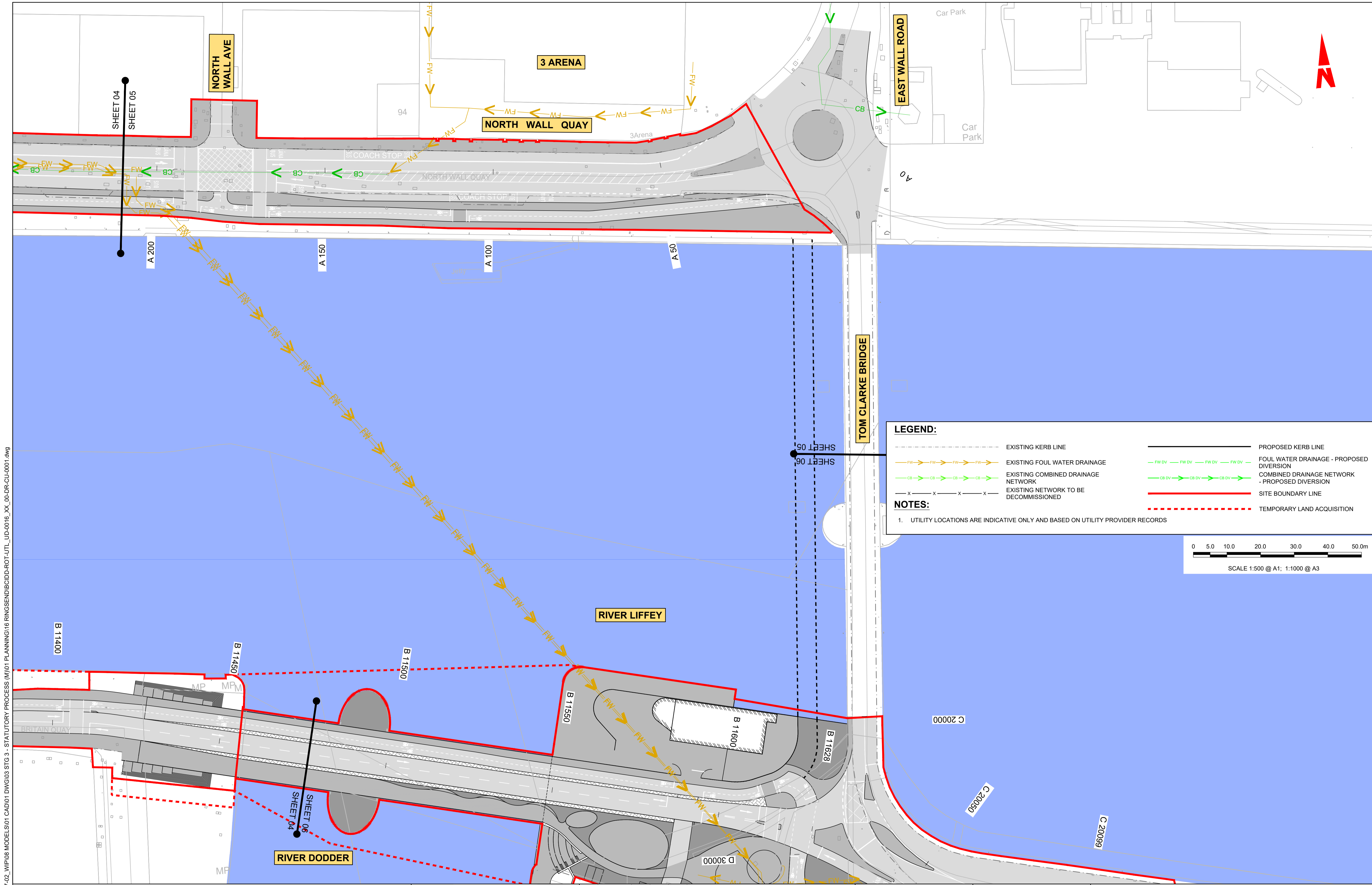


\\vodubp1u20191917117-02\_WIP08 MODELS01 CAD01 DWG03 STG 3 - STATUTORY PROCESS (M)01 PLANNING16 RINGSEND/BCIDD-ROT-UTL\_UD-0016\_XX\_00-DR-CU-0001.dwg

<p><b>Disclaimer</b></p> <p>a. © National Transport Authority (NTA) 2022. This drawing is confidential and the copyright in it is owned by NTA. This drawing must not be either loaned, copied or otherwise reproduced in whole or in part or used for any purpose without the prior permission of NTA.</p> <p>b. This drawing is to be used for the design element identified in the titlebox. Other information shown is to be considered indicative only. The drawing is to be read in conjunction with all other relevant design drawings.</p> <p>c. O.S. data used for plans are printed under © Ordnance Survey Ireland Government of Ireland. All rights reserved. Licence Number 2022/OSI_NMA_180 National Transport Authority. All elevations are in metres and relate to OSI Geoid Model (OSGM15) Mean Head. All Co-ordinates are in Irish Transverse Mercator Grid (ITM) as defined by OSI active local GPS station.</p> <p>d. Information concerning the position of apparatus shown on this drawing is based on drawings supplied by the utility owners and/or the utility works contractor, whilst every care has been taken in the preparation of this drawing, positions should be taken as approximate and are intended for general guidance only and no representation is made by the NTA as to the accuracy, completeness, sufficiency or otherwise of this drawing and the position of the apparatus. The information contained herein does not purport to be comprehensive or final as the apparatus is subject to being altered and/or superceded. Recipients should not rely on this information. Any liabilities are hereby expressly disclaimed.</p> <p>e. The information contained herein has been provided by the NTA but does not purport to be comprehensive or final. Recipients should not rely on the information. Neither the NTA nor any of its directors, officers, employees, agents, stakeholders or advisers make any representation or warranty as to, or accept any liability or responsibility in relation to, the adequacy, accuracy, reasonableness or completeness of the information provided as part of this document or any matter on which the information is based (including but not limited to loss or damage arising as a result of reliance by recipients on the information or any part of it). Any liabilities are hereby expressly disclaimed.</p>		<p>Rev M01 Date MAR 2023 Dm DS Chk'd EOC App'd SMG Description ISSUE FOR PHASE 4: PLANNING</p>		<p>Client <b>NTA</b> Údarás Náisiúnta Iompair National Transport Authority</p>		<p>Engineering Designer <b>CIROD</b> TYPSA</p>			<p>Programme Title <b>BUSCONNECTS DUBLIN</b> <b>CORE BUS CORRIDORS INFRASTRUCTURE WORKS</b></p>			
<p>Date MAR 2023 Scale 1:500 @ A1 1:1000 @ A3</p>		<p>Drawn DS Checked EOC Approved SMG</p>		<p>Programme Code BCIDD Originator Code ROT QMS Code</p>		<p>Drawing Title RINGSEND TO CITY CENTRE CORE BUS CORRIDOR SCHEME IW FOUL SEWER ASSET ALTERATIONS</p>						
<p>Drawing File Name BCIDD-ROT-UTL_UD-0016_XX_00-DR-CU-0004</p>						<p>Sheet Number 04 of 12</p>	<p>Status A</p>	<p>Rev M01</p>				

DO NOT SCALE USE FIGURED DIMENSIONS ONLY



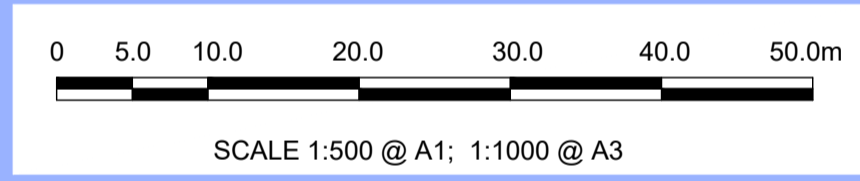


**LEGEND:**

- EXISTING KERB LINE
- EXISTING FOUL WATER DRAINAGE
- EXISTING COMBINED DRAINAGE NETWORK
- EXISTING NETWORK TO BE DECOMMISSIONED
- PROPOSED KERB LINE
- FOUL WATER DRAINAGE - PROPOSED DIVERSION
- COMBINED DRAINAGE NETWORK - PROPOSED DIVERSION
- SITE BOUNDARY LINE
- TEMPORARY LAND ACQUISITION

**NOTES:**

- UTILITY LOCATIONS ARE INDICATIVE ONLY AND BASED ON UTILITY PROVIDER RECORDS



\\nodubp1u20191917117-02\_WIP08 MODELS01 CAD01 DWG03 STG 3 - STATUTORY PROCESS (M)01 PLANNING16 RINGSEND/BCIDD-ROT-UTL\_UD-0016\_XX\_00-DR-CU-0001.dwg

**Disclaimer**

a. © National Transport Authority (NTA) 2022. This drawing is confidential and the copyright in it is owned by NTA. This drawing must not be either loaned, copied or otherwise reproduced in whole or in part or used for any purpose without the prior permission of NTA.

b. This drawing is to be used for the design element identified in the titlebox. Other information shown is to be considered indicative only. The drawing is to be read in conjunction with all other relevant design drawings.

c. O.S. data used for plans are printed under © Ordnance Survey Ireland Government of Ireland. All rights reserved. Licence Number 2022/OSI\_NMA\_180 National Transport Authority. All elevations are in metres and relate to OSI Geoid Model (OSGM15) Mean Head. All Co-ordinates are in Irish Transverse Mercator Grid (ITM) as defined by OSI active local GPS station.

d. Information concerning the position of apparatus shown on this drawing is based on drawings supplied by the utility owners and/or the utility works contractor, whilst every care has been taken in the preparation of this drawing, positions should be taken as approximate and are intended for general guidance only and no representation is made by the NTA as to the accuracy, completeness, sufficiency or otherwise of this information and the position of the apparatus. The information contained herein does not purport to be comprehensive or final as the apparatus is subject to being altered and/or superceded. Recipients should not rely on this information. Any liabilities are hereby expressly disclaimed.

e. The information contained herein has been provided by the NTA but does not purport to be comprehensive or final. Recipients should not rely on the information. Neither the NTA nor any of its directors, officers, employees, agents, stakeholders or advisers make any representation or warranty as to, or accept any liability or responsibility in relation to, the adequacy, accuracy, reasonableness or completeness of the information provided as part of this document or any matter on which the information is based (including but not limited to loss or damage arising as a result of reliance by recipients on the information or any part of it). Any liabilities are hereby expressly disclaimed.

Rev	Date	Drm	Chk'd	App'd	Description
M01	MAR 2023	DS	EOC	SMG	ISSUE FOR PHASE 4: PLANNING

Client: **NTA**  
Udarás Náisiúnta Iompair  
National Transport Authority

Date: MAR 2023 | Scale: 1:500 @ A1, 1:1000 @ A3

Engineering Designer: **FIROD** (TYPSA)

Drawn: DS | Checked: EOC | Approved: SMG

Programme Code: BCIDD | Originator Code: ROT | QMS Code:

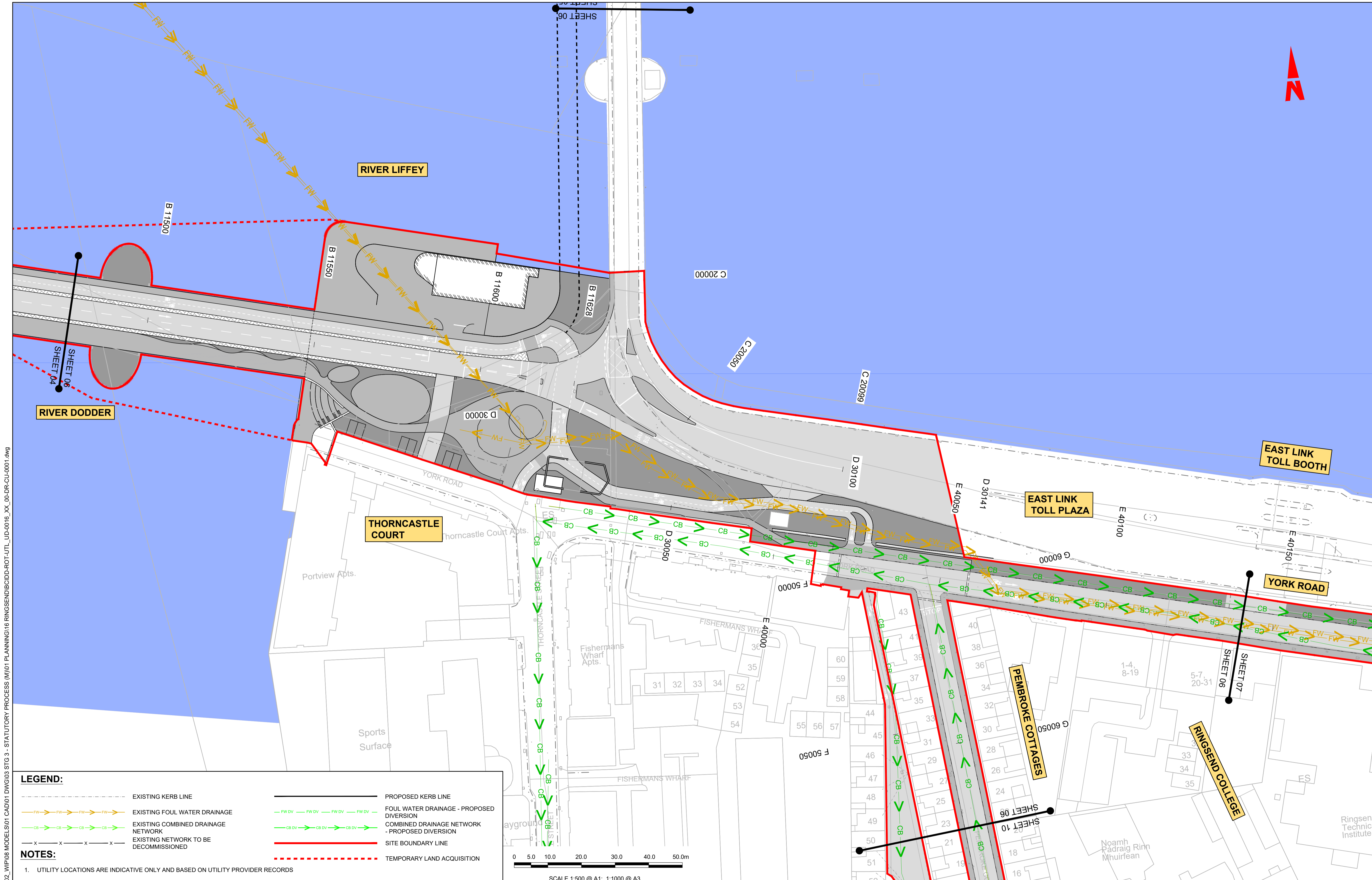
Programme Title: **BUSCONNECTS DUBLIN CORE BUS CORRIDORS INFRASTRUCTURE WORKS**

Drawing Title: RINGSEND TO CITY CENTRE CORE BUS CORRIDOR SCHEME IW FOUL SEWER ASSET ALTERATIONS

Drawing File Name: BCIDD-ROT-UTL\_UD-0016\_XX\_00-DR-CU-0005 | Sheet Number: 05 of 12 | Status: A | Rev: M01

DO NOT SCALE USE FIGURED DIMENSIONS ONLY





**Disclaimer**

a. © National Transport Authority (NTA) 2022. This drawing is confidential and the copyright in it is owned by NTA. This drawing must not be either loaned, copied or otherwise reproduced in whole or in part or used for any purpose without the prior permission of NTA.

b. This drawing is to be used for the design element identified in the titlebox. Other information shown is to be considered indicative only. The drawing is to be read in conjunction with all other relevant design drawings.

c. O.S. data used for plans are printed under © Ordnance Survey Ireland Government of Ireland. All rights reserved. Licence Number 2022/OSI\_NMA\_180 National Transport Authority. All elevations are in metres and relate to OSI Geoid Model (OSGM15) Mean Head. All Co-ordinates are in Irish Transverse Mercator Grid (ITM) as defined by OSI active local GPS station.

d. Information concerning the position of apparatus shown on this drawing is based on drawings supplied by the utility owners and/or the utility works contractor, whilst every care has been taken in the preparation of this drawing, positions should be taken as approximate and are intended for general guidance only and no representation is made by the NTA as to the accuracy, completeness, sufficiency or otherwise of this drawing and the position of the apparatus. The information contained herein does not purport to be comprehensive or final as the apparatus is subject to being altered and/or superseded. Recipients should not rely on this information. Any liabilities are hereby expressly disclaimed.

e. The information contained herein has been provided by the NTA but does not purport to be comprehensive or final. Recipients should not rely on the information. Neither the NTA nor any of its directors, officers, employees, agents, stakeholders or advisers make any representation or warranty as to, or accept any liability or responsibility in relation to, the adequacy, accuracy, reasonableness or completeness of the information provided as part of this document or any matter on which the information is based (including but not limited to loss or damage arising as a result of reliance by recipients on the information or any part of it). Any liabilities are hereby expressly disclaimed.

**Project Ireland 2040**  
Building Ireland's Future

Rev	Date	Drm	Chk'd	App'd	Description
M01	MAR 2023	DS	EOC	SMG	ISSUE FOR PHASE 4: PLANNING

Client: **NTA**  
Údarás Náisiúnta Iompair  
National Transport Authority

Engineering Designer: **CIROD**  
TYPSA

Date: MAR 2023  
Scale: 1:500 @ A1, 1:1000 @ A3

Programme Code: BCIDD  
Originator Code: ROT

Drawn: DS  
Checked: EOC  
Approved: SMG

Programme Title: <b>BUSCONNECTS DUBLIN</b>			
CORE BUS CORRIDORS INFRASTRUCTURE WORKS			
Drawing Title: RINGSEND TO CITY CENTRE CORE BUS CORRIDOR SCHEME IW FOUL SEWER ASSET ALTERATIONS			
Drawing File Name: BCIDD-ROT-UTL_UD-0016_XX_00-DR-CU-0006	Sheet Number: 06 of 12	Status: A	Rev: M01

DO NOT SCALE USE FIGURED DIMENSIONS ONLY

\\nodubp1u201919171717-02\_WIP008 MODELS01 CAD001 DWG003 STG 3 - STATUTORY PROCESS (M)01 PLANNING16 RINGSEND/BCIDD-ROT-UTL\_UD-0016\_XX\_00-DR-CU-0001.dwg

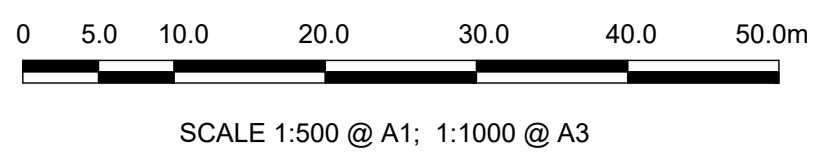


**LEGEND:**

- EXISTING KERB LINE
- EXISTING FOUL WATER DRAINAGE
- EXISTING COMBINED DRAINAGE NETWORK
- EXISTING NETWORK TO BE DECOMMISSIONED
- PROPOSED KERB LINE
- FOUL WATER DRAINAGE - PROPOSED DIVERSION
- COMBINED DRAINAGE NETWORK - PROPOSED DIVERSION
- SITE BOUNDARY LINE
- TEMPORARY LAND ACQUISITION

**NOTES:**

- UTILITY LOCATIONS ARE INDICATIVE ONLY AND BASED ON UTILITY PROVIDER RECORDS



\\nodubp1\U201919\171117-02\_WIP\08 MODELS\01 CAD\01 DWG\03 STG 3 - STATUTORY PROCESS (M)\01 PLANNING\16 RINGSEND\BCIDD-ROT-UTL\_UD-0016\_XX\_00-DR-CU-0001.dwg

**Disclaimer**

a. © National Transport Authority (NTA) 2022. This drawing is confidential and the copyright in it is owned by NTA. This drawing must not be either loaned, copied or otherwise reproduced in whole or in part or used for any purpose without the prior permission of NTA.

b. This drawing is to be used for the design element identified in the titlebox. Other information shown is to be considered indicative only. The drawing is to be read in conjunction with all other relevant design drawings.

c. O.S. data used for plans are printed under © Ordnance Survey Ireland Government of Ireland. All rights reserved. Licence Number 2022/OSI\_NMA\_180 National Transport Authority. All elevations are in metres and relate to OSI Geoid Model (OSGM15) Mean Head. All Co-ordinates are in Irish Transverse Mercator Grid (ITM) as defined by OSI active local GPS station.

d. Information concerning the position of apparatus shown on this drawing is based on drawings supplied by the utility owners and/or the utility works contractor, whilst every care has been taken in the preparation of this drawing, positions should be taken as approximate and are intended for general guidance only and no representation is made by the NTA as to the accuracy, completeness, sufficiency or otherwise of this information. Recipients should not rely on this information. Any liabilities are hereby expressly disclaimed.

e. The information contained herein has been provided by the NTA but does not purport to be comprehensive or final. Recipients should not rely on the information. Neither the NTA nor any of its directors, officers, employees, agents, stakeholders or advisers make any representation or warranty as to, or accept any liability or responsibility in relation to, the adequacy, accuracy, reasonableness or completeness of the information provided as part of this document or any matter on which the information is based (including but not limited to loss or damage arising as a result of reliance by recipients on the information or any part of it). Any liabilities are hereby expressly disclaimed.



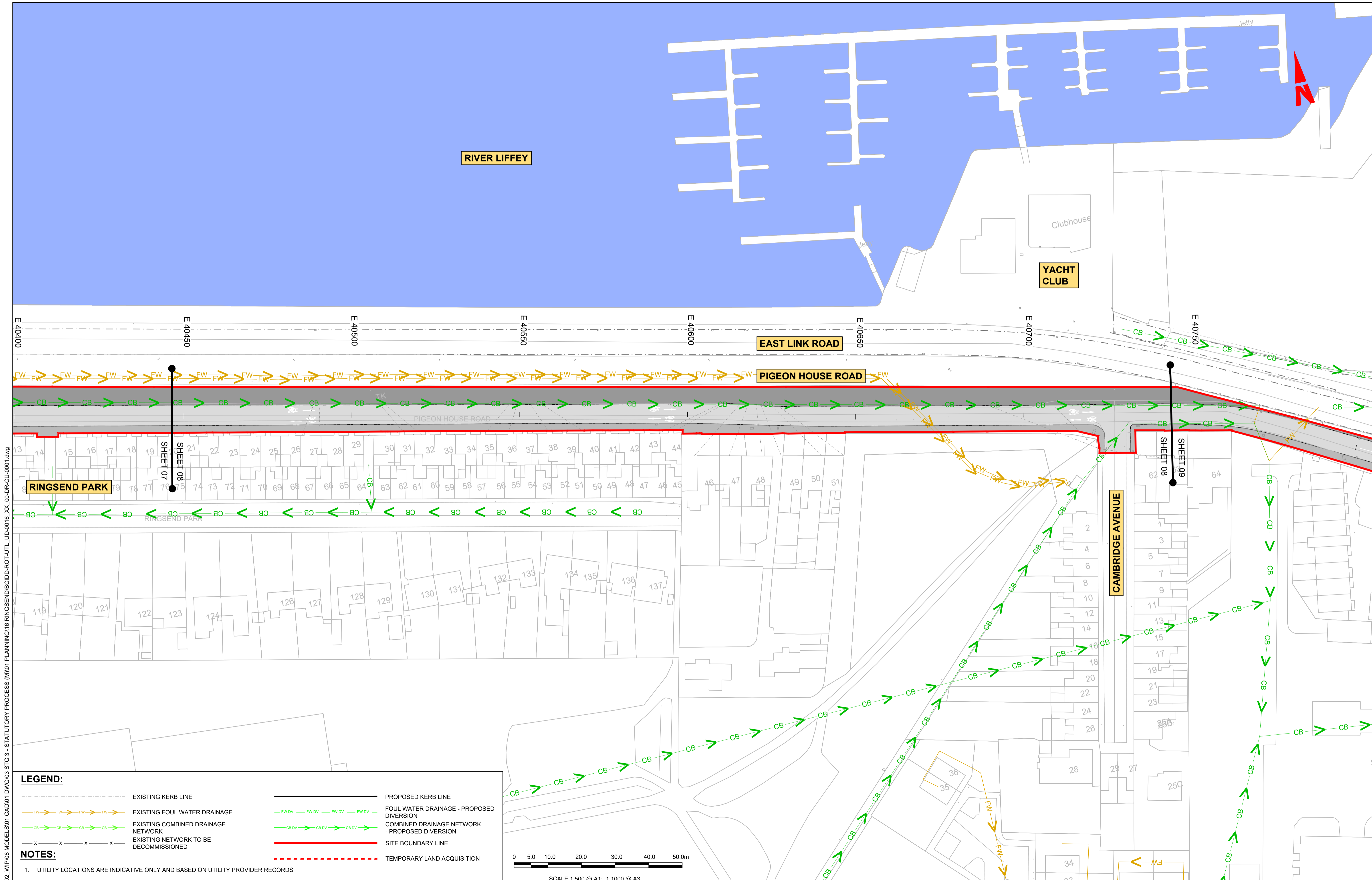
Rev	Date	Drn	Chk'd	App'd	Description
M01	MAR 2023	DS	EOC	SMG	ISSUE FOR PHASE 4: PLANNING

 Údarás Náisiúnta Iompair National Transport Authority		Engineering Designer  IROD TYPSA		
Date	Scale	Drawn	Checked	Approved
MAR 2023	1:500 @ A1 1:1000 @ A3	DS	EOC	SMG
Programme Code	Originator Code	QMS Code		
BCIDD	ROT			

Programme Title <b>BUSCONNECTS DUBLIN</b> <b>CORE BUS CORRIDORS INFRASTRUCTURE WORKS</b>			
Drawing Title RINGSEND TO CITY CENTRE CORE BUS CORRIDOR SCHEME IW FOUL SEWER ASSET ALTERATIONS			
Drawing File Name	Sheet Number	Status	Rev
BCIDD-ROT-UTL_UD-0016_XX_00-DR-CU-0007	07 of 12	A	M01

DO NOT SCALE USE FIGURED DIMENSIONS ONLY



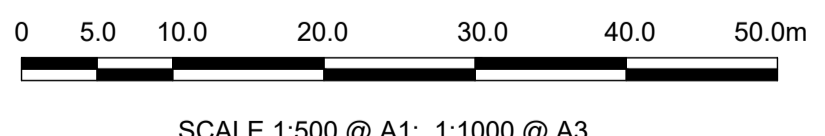


**LEGEND:**

- EXISTING KERB LINE
- PROPOSED KERB LINE
- EXISTING FOUL WATER DRAINAGE
- FOUL WATER DRAINAGE - PROPOSED DIVERSION
- EXISTING COMBINED DRAINAGE NETWORK
- COMBINED DRAINAGE NETWORK - PROPOSED DIVERSION
- EXISTING NETWORK TO BE DECOMMISSIONED
- SITE BOUNDARY LINE
- TEMPORARY LAND ACQUISITION

**NOTES:**

- UTILITY LOCATIONS ARE INDICATIVE ONLY AND BASED ON UTILITY PROVIDER RECORDS



\\nodubp1\j\2019\1917\17117-02\_WIP\08 MODELS\01 CAD\01 PLANNING\16 RINGSEND\BCIDD-ROT-UTL\_UD-0016\_XX\_00-DR-CU-0001.dwg

**Disclaimer**

a. © National Transport Authority (NTA) 2022. This drawing is confidential and the copyright in it is owned by NTA. This drawing must not be either loaned, copied or otherwise reproduced in whole or in part or used for any purpose without the prior permission of NTA.

b. This drawing is to be used for the design element identified in the titlebox. Other information shown is to be considered indicative only. The drawing is to be read in conjunction with all other relevant design drawings.

c. O.S. data used for plans are printed under © Ordnance Survey Ireland Government of Ireland. All rights reserved. Licence Number 2022/OSI\_NMA\_180 National Transport Authority. All elevations are in metres and relate to OSI Geoid Model (OSGM15) Mean Head. All Co-ordinates are in Irish Transverse Mercator Grid (ITM) as defined by OSI active local GPS station.

d. Information concerning the position of apparatus shown on this drawing is based on drawings supplied by the utility owners and/or the utility works contractor, whilst every care has been taken in the preparation of this drawing, positions should be taken as approximate and are intended for general guidance only and no representation is made by the NTA as to the accuracy, completeness, sufficiency or otherwise of this drawing and the position of the apparatus. The information contained herein does not purport to be comprehensive or final as the apparatus is subject to being altered and/or superseded. Recipients should not rely on this information. Any liabilities are hereby expressly disclaimed.

e. The information contained herein has been provided by the NTA but does not purport to be comprehensive or final. Recipients should not rely on the information. Neither the NTA nor any of its directors, officers, employees, agents, stakeholders or advisers make any representation or warranty as to, or accept any liability or responsibility in relation to, the adequacy, accuracy, reasonableness or completeness of the information provided as part of this document or any matter on which the information is based (including but not limited to loss or damage arising as a result of reliance by recipients on the information or any part of it). Any liabilities are hereby expressly disclaimed.

Rev	Date	Drm	Chk'd	App'd	Description
M01	MAR 2023	DS	EOC	SMG	ISSUE FOR PHASE 4: PLANNING

Client: **NTA**  
Udarás Náisiúnta Iompair  
National Transport Authority

Engineering Designer: **CIROD**  
TYPSA

Date: MAR 2023  
Scale: 1:500 @ A1  
1:1000 @ A3

Drawn: DS  
Checked: EOC  
Approved: SMG

Programme Code: BCIDD  
Originator Code: ROT  
QMS Code:

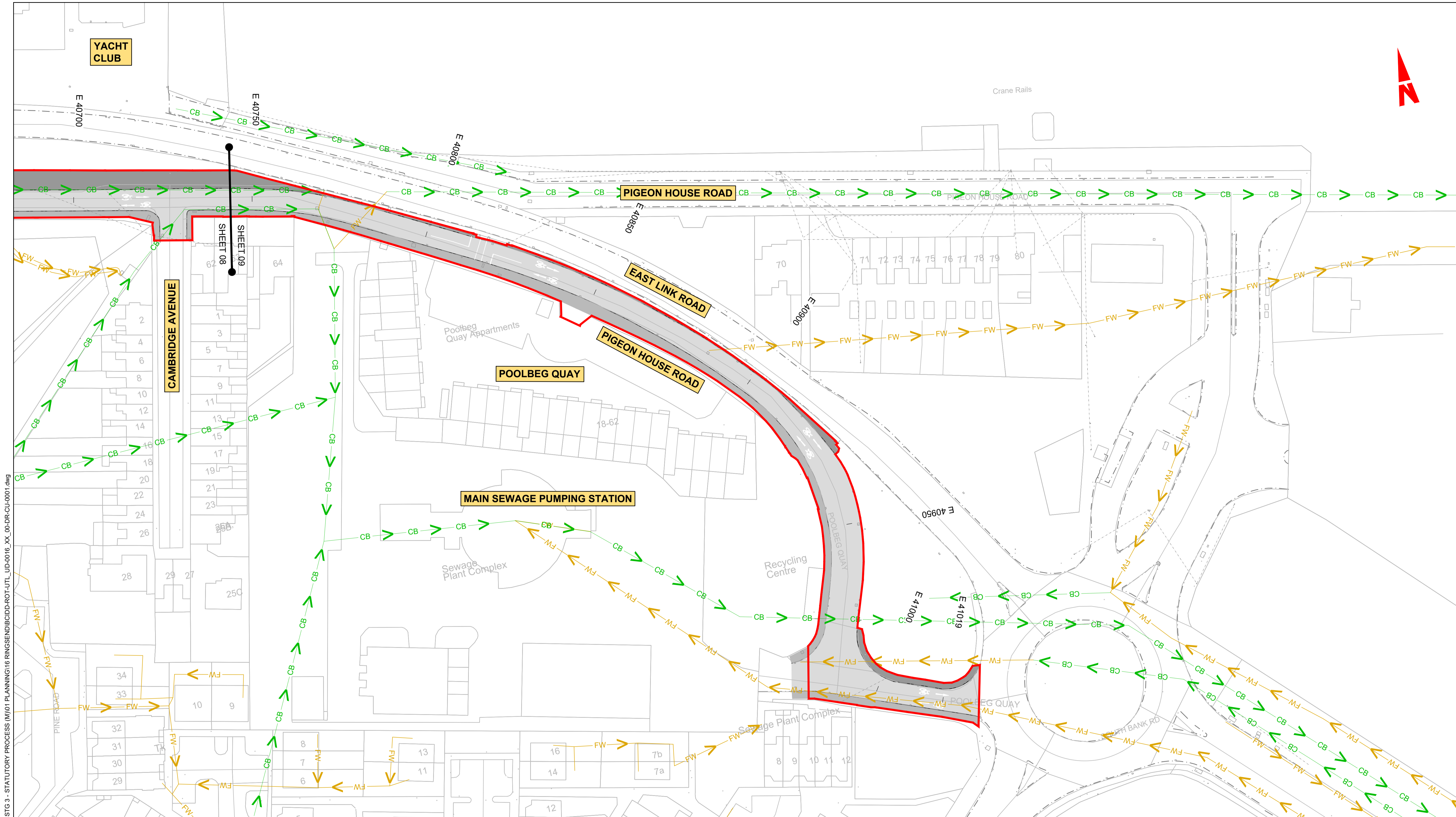
Programme Title: **BUSCONNECTS DUBLIN**  
**CORE BUS CORRIDORS INFRASTRUCTURE WORKS**

Drawing Title: RINGSEND TO CITY CENTRE CORE BUS CORRIDOR SCHEME  
IW FOUL SEWER ASSET ALTERATIONS

Drawing File Name: BCIDD-ROT-UTL\_UD-0016\_XX\_00-DR-CU-0008  
Sheet Number: 08 of 12  
Status: A  
Rev: M01

DO NOT SCALE USE FIGURED DIMENSIONS ONLY





W:\000000\11719117-02\_WIP\08 MODELS\01 CAD\01 PLANNING\16 RINGSEND\BCIDD-ROT-UTL\_UD-0016\_XX\_00-DR-CU-0001.dwg  
 16 RINGSEND\BCIDD-ROT-UTL\_UD-0016\_XX\_00-DR-CU-0001.dwg

**LEGEND:**

	EXISTING KERB LINE		PROPOSED KERB LINE
	EXISTING FOUL WATER DRAINAGE		FOUL WATER DRAINAGE - PROPOSED DIVERSION
	EXISTING COMBINED DRAINAGE NETWORK		COMBINED DRAINAGE NETWORK - PROPOSED DIVERSION
	EXISTING NETWORK TO BE DECOMMISSIONED		SITE BOUNDARY LINE
			TEMPORARY LAND ACQUISITION

**NOTES:**

- UTILITY LOCATIONS ARE INDICATIVE ONLY AND BASED ON UTILITY PROVIDER RECORDS

0 5.0 10.0 20.0 30.0 40.0 50.0m  
 SCALE 1:500 @ A1; 1:1000 @ A3

**Disclaimer:**

a. © National Transport Authority (NTA) 2022. This drawing is confidential and the copyright in it is owned by NTA. This drawing must not be either loaned, copied or otherwise reproduced in whole or in part or used for any purpose without the prior permission of NTA.

b. This drawing is to be used for the design element identified in the titleblock. Other information shown is to be considered indicative only. The drawing is to be read in conjunction with all other relevant design drawings.

c. O.S. data used for plans are printed under © Ordnance Survey Ireland Government of Ireland. All rights reserved. Licence Number 2022/OSI\_NMA\_180 National Transport Authority. All elevations are in metres and relate to OSI Geoid Model (OSGM15) Mean Head. All Co-ordinates are in Irish

Transverse Mercator Grid (ITM) as defined by OSI active local GPS station.

d. Information concerning the position of apparatus shown on this drawing is based on drawings supplied by the utility owners and/or the utility works contractor, whilst every care has been taken in the preparation of this drawing, positions should be taken as approximate and are intended for general guidance only and no representation is made by the NTA as to the accuracy, completeness, sufficiency or otherwise of this drawing and the position of the apparatus. The information contained herein does not purport to be comprehensive or final as the apparatus is subject to being altered and/or superceded. Recipients should not rely on this information. Any liabilities are hereby expressly disclaimed.

The information contained herein has been provided by the NTA but does not purport to be comprehensive or final. Recipients should not rely on the information. Neither the NTA nor any of its directors, officers, employees, agents, stakeholders or advisers make any representation or warranty as to, or accept any liability or responsibility in relation to, the adequacy, accuracy, reasonableness or completeness of the information provided as part of this document or any matter on which the information is based (including but not limited to loss or damage arising as a result of reliance by recipients on the information or any part of it). Any liabilities are hereby expressly disclaimed.



Rev	Date	Drm	Chk'd	App'd	Description
M01	MAR 2023	DS	EOC	SMG	ISSUE FOR PHASE 4: PLANNING

Client

Udarás Náisiúnta Iompair  
National Transport Authority

Engineering Designer

Drawn DS  
Checked EOC  
Approved SMG

Programme Title  
**BUSCONNECTS DUBLIN  
CORE BUS CORRIDORS INFRASTRUCTURE WORKS**

Drawing Title  
RINGSEND TO CITY CENTRE CORE BUS CORRIDOR SCHEME  
IW FOUL SEWER ASSET ALTERATIONS

Drawing File Name  
BCIDD-ROT-UTL\_UD-0016\_XX\_00-DR-CU-0009

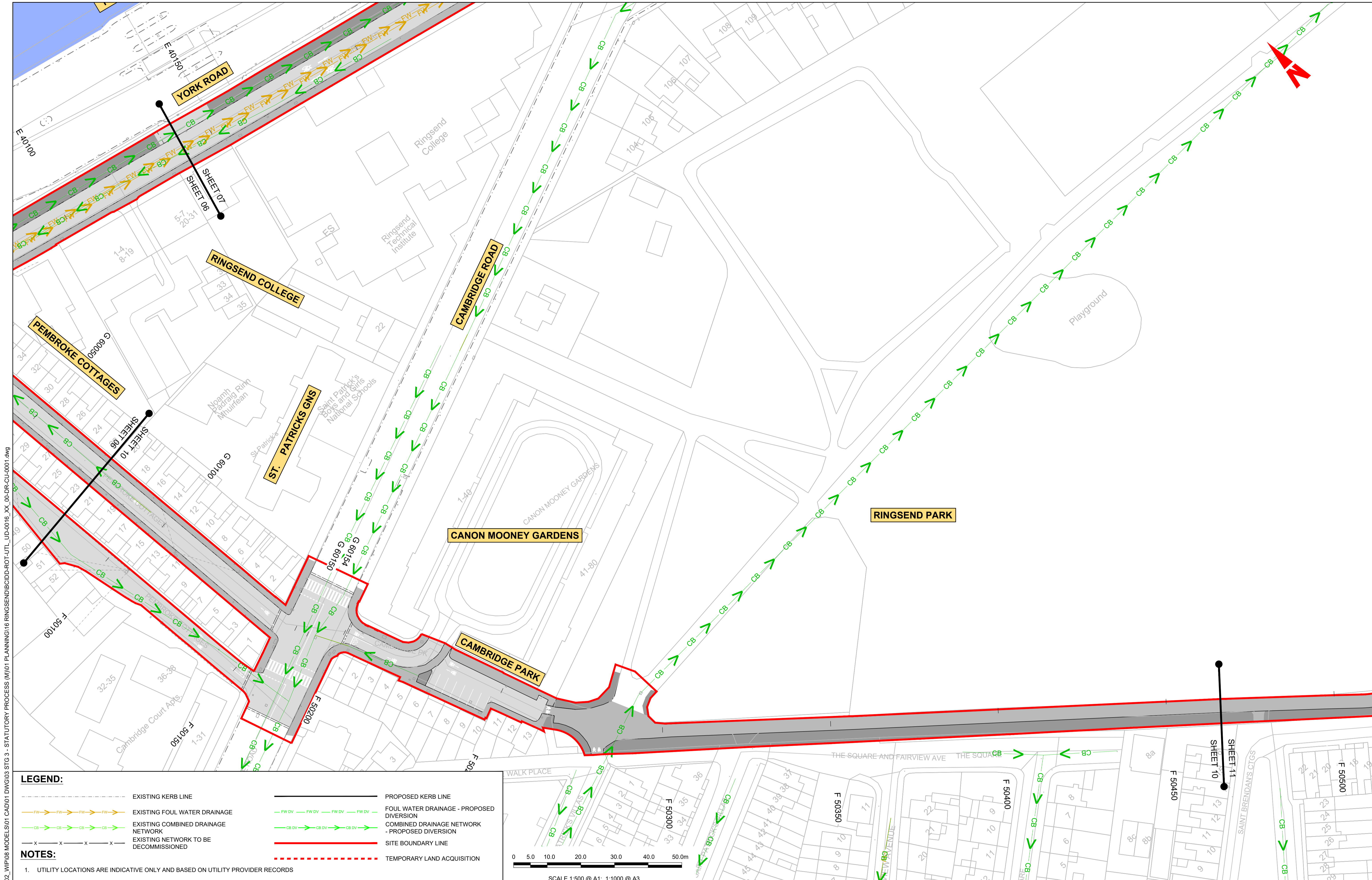
Sheet Number  
09 of 12

Status  
A

Rev  
M01

DO NOT SCALE USE FIGURED DIMENSIONS ONLY



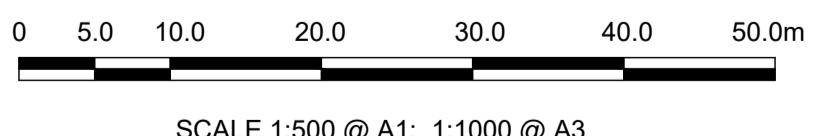


**LEGEND:**

- EXISTING KERB LINE
- PROPOSED KERB LINE
- EXISTING FOUL WATER DRAINAGE
- FOUL WATER DRAINAGE - PROPOSED DIVERSION
- EXISTING COMBINED DRAINAGE NETWORK
- COMBINED DRAINAGE NETWORK - PROPOSED DIVERSION
- EXISTING NETWORK TO BE DECOMMISSIONED
- SITE BOUNDARY LINE
- TEMPORARY LAND ACQUISITION

**NOTES:**

- UTILITY LOCATIONS ARE INDICATIVE ONLY AND BASED ON UTILITY PROVIDER RECORDS



**Disclaimer:**

a. © National Transport Authority (NTA) 2022. This drawing is confidential and the copyright in it is owned by NTA. This drawing must not be either loaned, copied or otherwise reproduced in whole or in part or used for any purpose without the prior permission of NTA.

b. This drawing is to be used for the design element identified in the titlebox. Other information shown is to be considered indicative only. The drawing is to be read in conjunction with all other relevant design drawings.

c. O.S. data used for plans are printed under © Ordnance Survey Ireland Government of Ireland. All rights reserved. Licence Number 2022/OSI\_NMA\_180 National Transport Authority. All elevations are in metres and relate to OSi Geoid Model (OSGM15) Mean Head. All Co-ordinates are in Irish Transverse Mercator Grid (ITM) as defined by OSI active local GPS station.

d. Information concerning the position of apparatus shown on this drawing is based on drawings supplied by the utility owners and/or the utility works contractor, whilst every care has been taken in the preparation of this drawing, positions should be taken as approximate and are intended for general guidance only and no representation is made by the NTA as to the accuracy, completeness, sufficiency or otherwise of this drawing and the position of the apparatus. The information contained herein does not purport to be comprehensive or final as the apparatus is subject to being altered and/or superceded. Recipients should not rely on this information. Any liabilities are hereby expressly disclaimed.

e. The information contained herein has been provided by the NTA but does not purport to be comprehensive or final. Recipients should not rely on the information. Neither the NTA nor any of its directors, officers, employees, agents, stakeholders or advisers make any representation or warranty as to, or accept any liability or responsibility in relation to, the adequacy, accuracy, reasonableness or completeness of the information provided as part of this document or any matter on which the information is based (including but not limited to loss or damage arising as a result of reliance by recipients on the information or any part of it). Any liabilities are hereby expressly disclaimed.



Rev	Date	Drm	Chk'd	App'd	Description
M01	MAR 2023	DS	EOC	SMG	ISSUE FOR PHASE 4: PLANNING

Client

Udarás Náisiúnta Iompair  
National Transport Authority

Date: MAR 2023  
Scale: 1:500 @ A1  
1:1000 @ A3

Engineering Designer

Drawn: DS  
Checked: EOC  
Approved: SMG

Programme Title: **BUSCONNECTS DUBLIN CORE BUS CORRIDORS INFRASTRUCTURE WORKS**

Drawing Title: RINGSEND TO CITY CENTRE CORE BUS CORRIDOR SCHEME IW FOUL SEWER ASSET ALTERATIONS

Drawing File Name: BCIDD-ROT-UTL\_UD-0016\_XX\_00-DR-CU-0010

Sheet Number: 10 of 12

Status: A

Rev: M01

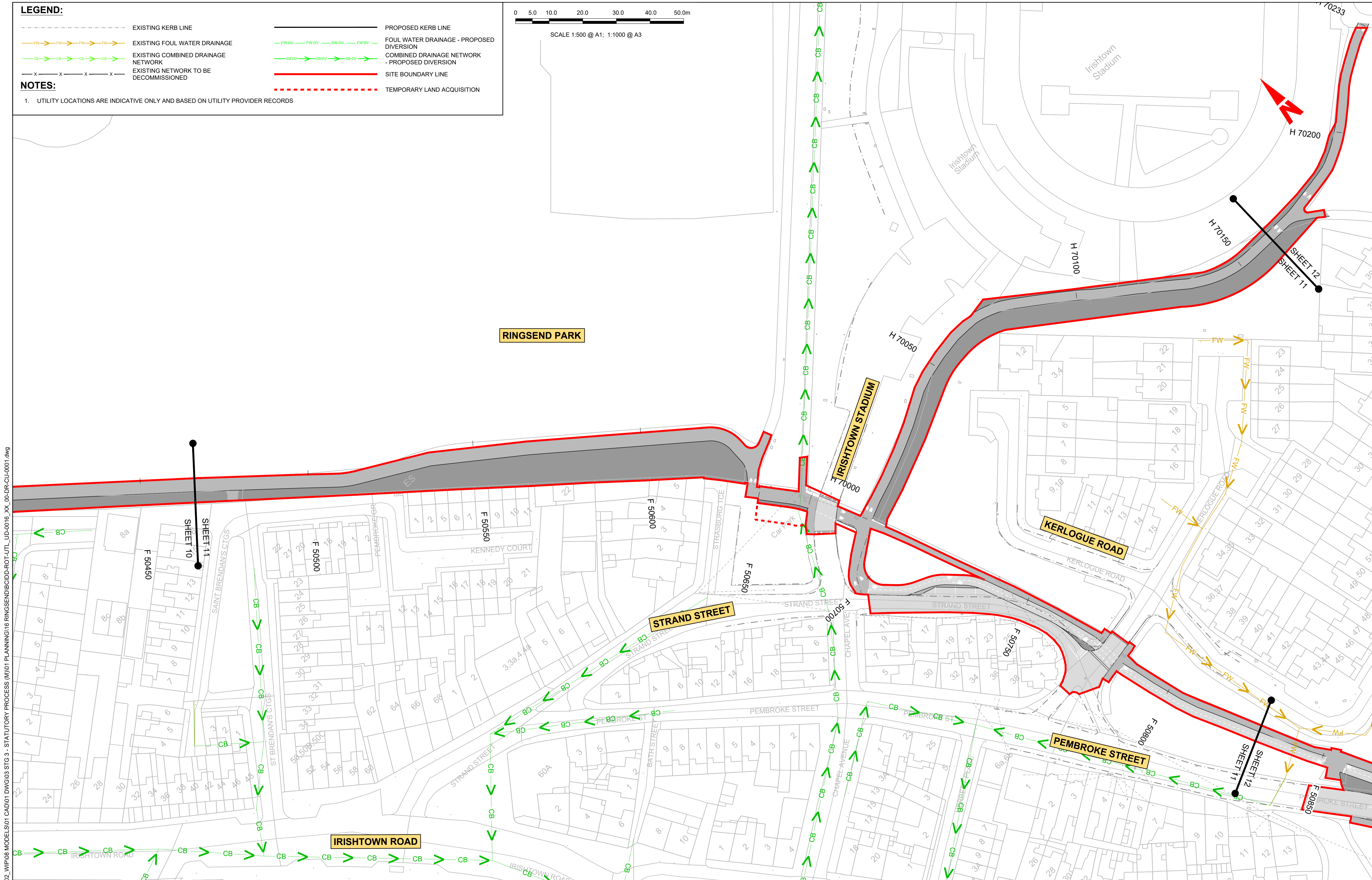
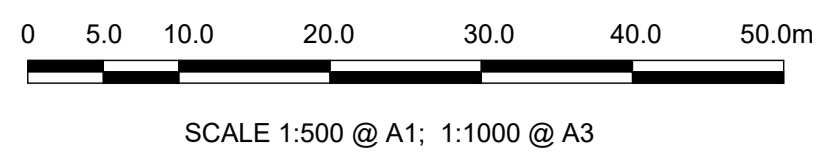


**LEGEND:**

- EXISTING KERB LINE
- EXISTING FOUL WATER DRAINAGE
- EXISTING COMBINED DRAINAGE NETWORK
- EXISTING NETWORK TO BE DECOMMISSIONED
- PROPOSED KERB LINE
- FOUL WATER DRAINAGE - PROPOSED DIVERSION
- COMBINED DRAINAGE NETWORK - PROPOSED DIVERSION
- SITE BOUNDARY LINE
- TEMPORARY LAND ACQUISITION

**NOTES:**

- UTILITY LOCATIONS ARE INDICATIVE ONLY AND BASED ON UTILITY PROVIDER RECORDS



\\odubp1u20191717117-02\_WIP\08 MODELS\01 CAD\01 DWG\03 STG 3 - STATUTORY PROCESS (M)\01 PLANNING\16 RINGSEND\BCIDD-ROT-UTL\_UD-0016\_XX\_00-DR-CU-0001.dwg

**Disclaimer**

a. © National Transport Authority (NTA) 2022. This drawing is confidential and the copyright in it is owned by NTA. This drawing must not be either loaned, copied or otherwise reproduced in whole or in part or used for any purpose without the prior permission of NTA.

b. This drawing is to be used for the design element identified in the titlebox. Other information shown is to be considered indicative only. The drawing is to be read in conjunction with all other relevant design drawings.

c. O.S. data used for plans are printed under © Ordnance Survey Ireland Government of Ireland. All rights reserved. Licence Number 2022/OSI\_NMA\_180 National Transport Authority. All elevations are in metres and relate to OSI Geoid Model (OSGM15) Mean Head. All Co-ordinates are in Irish Transverse Mercator Grid (ITM) as defined by OSI active local GPS station.

d. Information concerning the position of apparatus shown on this drawing is based on drawings supplied by the utility owners and/or the utility works contractor, whilst every care has been taken in the preparation of this drawing, positions should be taken as approximate and are intended for general guidance only and no representation is made by the NTA as to the accuracy, completeness, sufficiency or otherwise of this drawing and the position of the apparatus. The information contained herein does not purport to be comprehensive or final as the apparatus is subject to being altered and/or superceded. Recipients should not rely on this information. Any liabilities are hereby expressly disclaimed.

e. The information contained herein has been provided by the NTA but does not purport to be comprehensive or final. Recipients should not rely on the information. Neither the NTA nor any of its directors, officers, employees, agents, stakeholders or advisers make any representation or warranty as to, or accept any liability or responsibility in relation to, the adequacy, accuracy, reasonableness or completeness of the information provided as part of this document or any matter on which the information is based (including but not limited to loss or damage arising as a result of reliance by recipients on the information or any part of it). Any liabilities are hereby expressly disclaimed.



Rev	Date	Drm	Chk'd	App'd	Description
M01	MAR 2023	DS	EOC	SMG	ISSUE FOR PHASE 4: PLANNING

Client: **NTA** Údarás Náisiúnta Iompair National Transport Authority

Engineering Designer: **CIROD** TYPSA

Date: MAR 2023 Scale: 1:500 @ A1, 1:1000 @ A3

Programme Code: BCIDD Originator Code: ROT

Drawn: DS Checked: EOC Approved: SMG

QMS Code:

Programme Title: **BUSCONNECTS DUBLIN CORE BUS CORRIDORS INFRASTRUCTURE WORKS**

Drawing Title: RINGSEND TO CITY CENTRE CORE BUS CORRIDOR SCHEME IW FOUL SEWER ASSET ALTERATIONS

Drawing File Name: BCIDD-ROT-UTL\_UD-0016\_XX\_00-DR-CU-0011

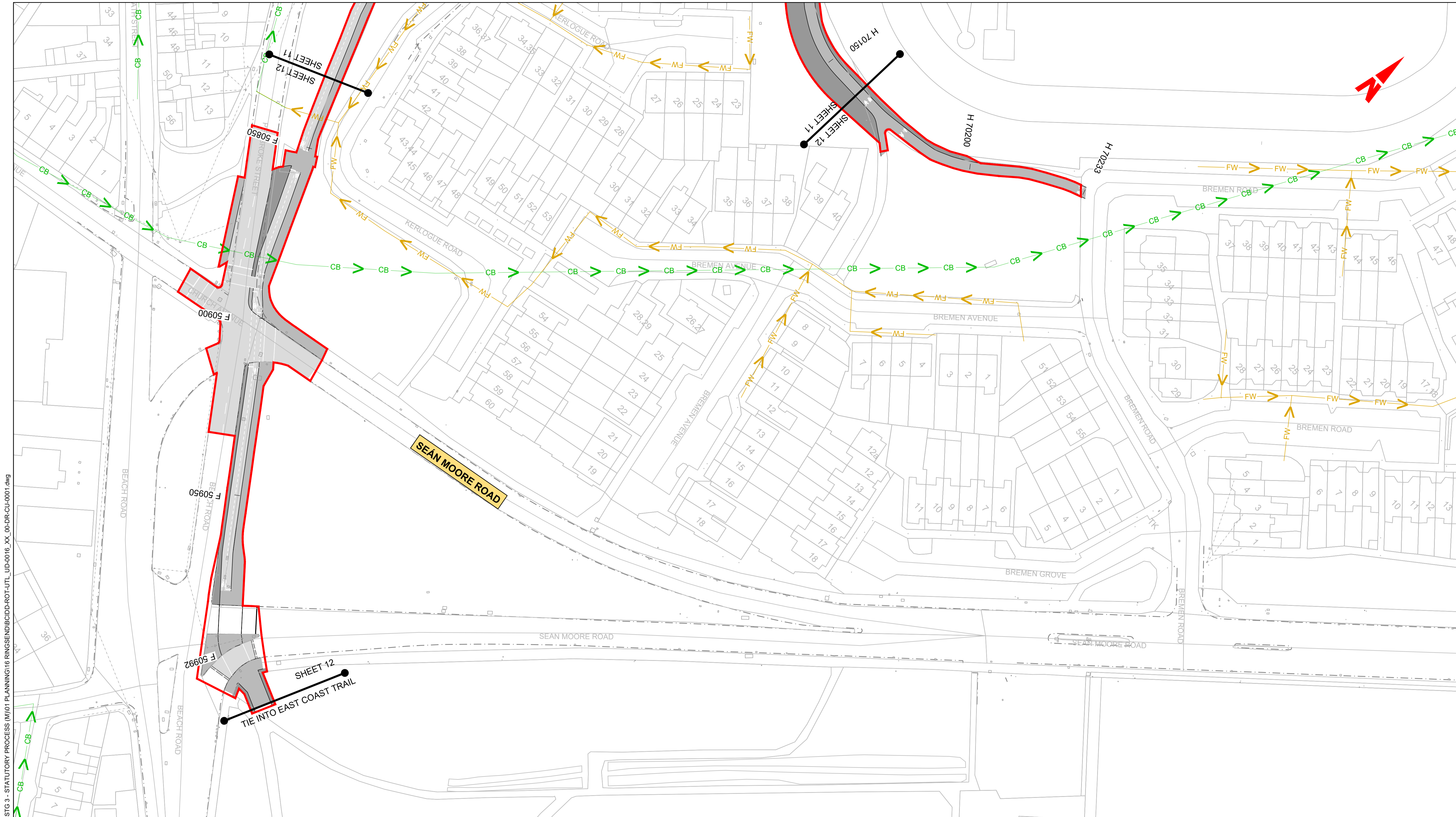
Sheet Number: 11 of 12

Status: A

Rev: M01

DO NOT SCALE USE FIGURED DIMENSIONS ONLY



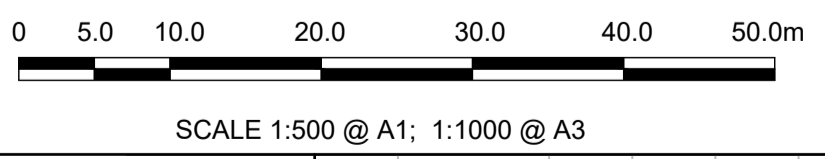


**LEGEND:**

- EXISTING KERB LINE
- PROPOSED KERB LINE
- EXISTING FOUL WATER DRAINAGE
- FOUL WATER DRAINAGE - PROPOSED DIVERSION
- EXISTING COMBINED DRAINAGE NETWORK
- COMBINED DRAINAGE NETWORK - PROPOSED DIVERSION
- EXISTING NETWORK TO BE DECOMMISSIONED
- SITE BOUNDARY LINE
- TEMPORARY LAND ACQUISITION

**NOTES:**

- UTILITY LOCATIONS ARE INDICATIVE ONLY AND BASED ON UTILITY PROVIDER RECORDS



**Disclaimer:**

a. © National Transport Authority (NTA) 2022. This drawing is confidential and the copyright in it is owned by NTA. This drawing must not be either loaned, copied or otherwise reproduced in whole or in part or used for any purpose without the prior permission of NTA.

b. This drawing is to be used for the design element identified in the titleblock. Other information shown is to be considered indicative only. The drawing is to be read in conjunction with all other relevant design drawings.

c. D.S. data used for plans are printed under © Ordnance Survey Ireland Government of Ireland. All rights reserved. Licence Number 2022/OSI\_NMA\_180 National Transport Authority. All elevations are in metres and relate to OSi Geoid Model (OSGM15) Mean Head. All Co-ordinates are in Irish Transverse Mercator Grid (ITM) as defined by OSI active local GPS station.

d. Information concerning the position of apparatus shown on this drawing is based on drawings supplied by the utility owners and/or the utility works contractor, whilst every care has been taken in the preparation of this drawing, positions should be taken as approximate and are intended for general guidance only and no representation is made by the NTA as to the accuracy, completeness, sufficiency or otherwise of this drawing and the position of the apparatus. The information contained herein does not purport to be comprehensive or final as the apparatus is subject to being altered and/or superceded. Recipients should not rely on this information. Any liabilities are hereby expressly disclaimed.

e. The information contained herein has been provided by the NTA but does not purport to be comprehensive or final. Recipients should not rely on the information. Neither the NTA nor any of its directors, officers, employees, agents, stakeholders or advisers make any representation or warranty as to, or accept any liability or responsibility in relation to, the adequacy, accuracy, reasonableness or completeness of the information provided as part of this document or any matter on which the information is based (including but not limited to loss or damage arising as a result of reliance by recipients on the information or any part of it). Any liabilities are hereby expressly disclaimed.



Rev	Date	Drn	Chk'd	App'd	Description
M01	MAR 2023	DS	EOC	SMG	ISSUE FOR PHASE 4: PLANNING

Client: **NTA**  
Udarás Náisiúnta Iompair  
National Transport Authority

Engineering Designer: **CIROD**  
TYPSA

Date: MAR 2023  
Scale: 1:500 @ A1  
1:1000 @ A3

Drawn: DS  
Checked: EOC  
Approved: SMG

Programme Code: BCIDD  
Originator Code: ROT  
QMS Code:

Programme Title <b>BUSCONNECTS DUBLIN CORE BUS CORRIDORS INFRASTRUCTURE WORKS</b>			
Drawing Title RINGSEND TO CITY CENTRE CORE BUS CORRIDOR SCHEME IW FOUL SEWER ASSET ALTERATIONS			
Drawing File Name BCIDD-ROT-UTL_UD-0016_XX_00-DR-CU-0012	Sheet Number 12 of 12	Status A	Rev M01

DO NOT SCALE USE FIGURED DIMENSIONS ONLY

\\produbp1\U201919\17117-02\_WIP\08 MODELS\01 CAD\01 PLANNING\16 RINGSEND\BCIDD-ROT-UTL\_UD-0016\_XX\_00-DR-CU-001.dwg