


**Ringsend to
City Centre Core
Bus Corridor Scheme**
July 2023

**Natura
Impact
Statement**

Appendices

**BUS
CONNECTS**

SUSTAINABLE TRANSPORT FOR A BETTER CITY.

The background features a large orange field. At the top, there are horizontal bands of blue and dark blue, with a green curved shape on the left. On the right side, there is a vertical green bar and a blue rounded rectangle containing two white circles. In the bottom-left corner, there is a dark blue curved shape containing a white circle with a blue border.

Appendix I
General
Arrangement
Drawings



BUSCONNECTS DUBLIN CORE BUS CORRIDORS INFRASTRUCTURE WORKS

RINGSEND TO CITY CENTRE CORE BUS CORRIDOR SCHEME

GENERAL ARRANGEMENT

DRAWING SERIES NUMBER(S)

BCIDD-ROT-GEO_IX-0016_XX_00-DR-CR-0001
 BCIDD-ROT-GEN_KP-0016_XX_00-DR-CR-0001
 BCIDD-ROT-GEO_GA-0016_XX_00-DR-CR-0001 to 0012

DRAWING SERIES DESCRIPTION

RINGSEND TO CITY CENTRE CORE BUS CORRIDOR SCHEME. GENERAL ARRANGEMENT DRAWINGS. COVER SHEET
 RINGSEND TO CITY CENTRE CORE BUS CORRIDOR SCHEME. GENERAL ARRANGEMENT. KEY PLAN
 RINGSEND TO CITY CENTRE CORE BUS CORRIDOR SCHEME. GENERAL ARRANGEMENT DRAWINGS.

\\rodubp1\U201919\17\117-02_WIP\08 MODELS\01 CAD\01 DWG\03 STG 3 - STATUTORY PROCESS (M)\01 PLANNING\16 RINGSEND\Cover_Sheets\BCIDD-ROT-GEO_IX-0016_XX_00-DR-CR-0001.dwg

Disclaimer
 a. © National Transport Authority (NTA) 2022. This drawing is confidential and the copyright in it is owned by NTA. This drawing must not be either loaned, copied or otherwise reproduced in whole or in part or used for any purpose without the prior permission of NTA.
 b. This drawing is to be used for the design element identified in the title block. Other information shown is to be considered indicative only. The drawing is to be read in conjunction with all other relevant design drawings.
 c. O.S. data used for plans are printed under © Ordnance Survey Ireland Government of Ireland. All rights reserved. Licence Number 2022/O.SI_NMA_180 National Transport Authority. All elevations are in metres and relate to OSi Geoid Model (OSGM15) Mean Head. All Co-ordinates are in Irish

Transverse Mercator Grid (ITM) as defined by OSi active local GPS station.
 d. Information concerning the position of apparatus shown on this drawing is based on drawings supplied by the utility owners and/or the utility works contractor, whilst every care has been taken in the preparation of this drawing, positions should be taken as approximate and are intended for general guidance only and no representation is made by the NTA as to the accuracy, completeness, sufficiency or otherwise of this drawing and the position of the apparatus. The information contained herein does not purport to be comprehensive or final as the apparatus is subject to being altered and/or superceded. Recipients should not rely on this information. Any liabilities are hereby expressly disclaimed.

e. The information contained herein has been provided by the NTA but does not purport to be comprehensive or final. Recipients should not rely on the information. Neither the NTA nor any of its directors, officers, employees, agents, stakeholders or advisers make any representation or warranty as to, or accept any liability or responsibility in relation to, the adequacy, accuracy, reasonableness or completeness of the information provided as part of this document or any matter on which the information is based (including but not limited to loss or damage arising as a result of reliance by recipients on the information or any part of it). Any liabilities are hereby expressly disclaimed.

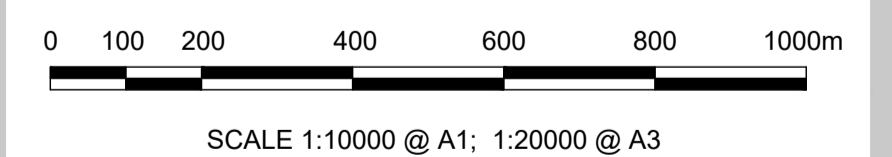
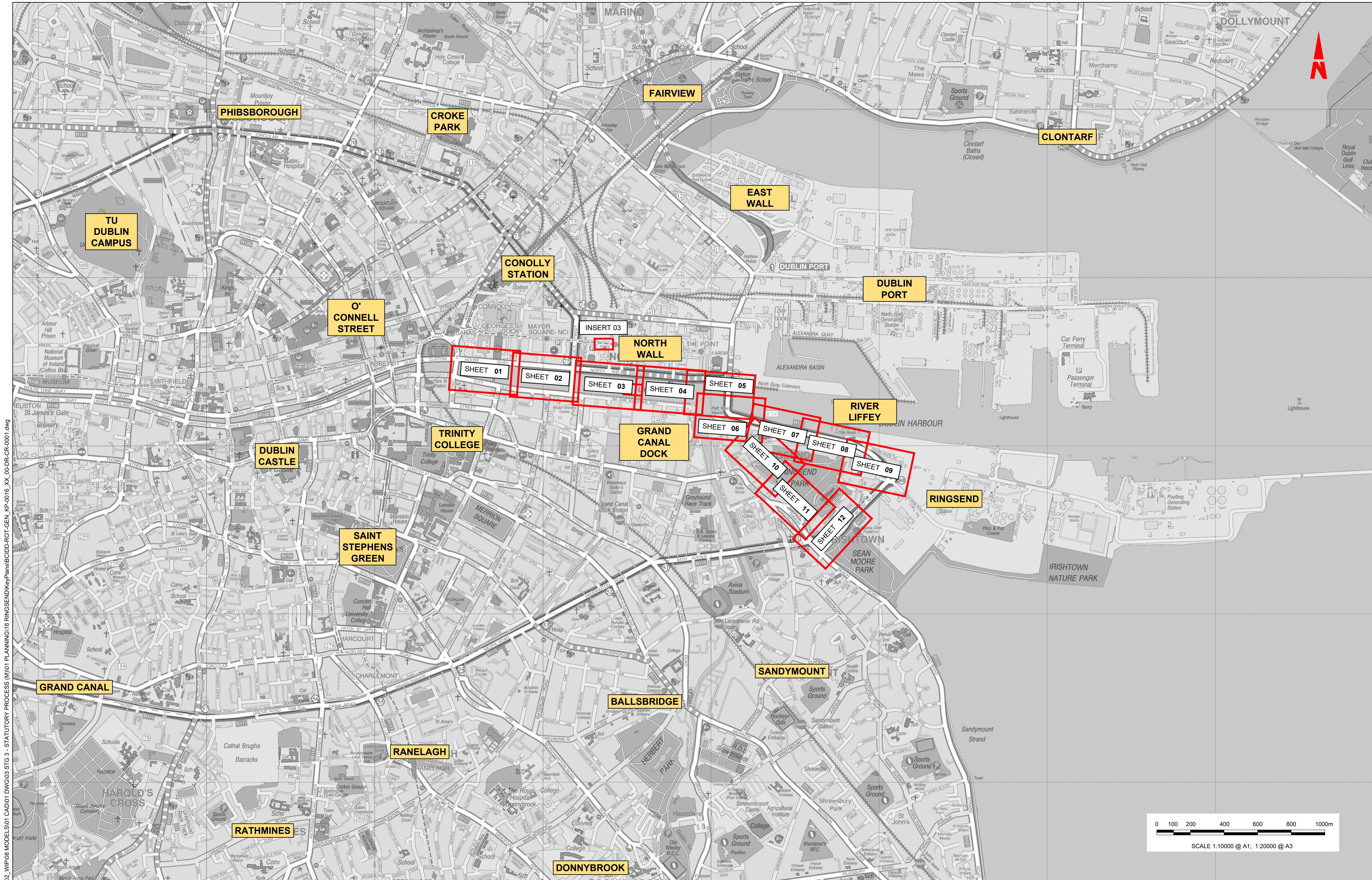


Rev	Date	Drn	Chk'd	App'd	Description
M01	MAR 2023	DS	EOC	SMG	ISSUE FOR PHASE 4: PLANNING

Client NTA Údarás Náisiúnta Iompair National Transport Authority		Engineering Designer ROD TYP SA ROUGHAN & O'DONOVAN TYP SA		
Date MAR 2023	Scale NTS @ A1 NTS @ A3	Drawn DS	Checked EOC	Approved SMG
Programme Code BCIDD	Originator Code ROT	QMS Code		

Programme Title BUSCONNECTS DUBLIN CORE BUS CORRIDORS INFRASTRUCTURE WORKS			
Drawing Title RINGSEND TO CITY CENTRE CORE BUS CORRIDOR SCHEME GENERAL ARRANGEMENT PLAN COVER SHEET			
Drawing File Name BCIDD-ROT-GEO_IX-0016_XX_00-DR-CR-0001	Sheet Number 01 of 01	Status A	Rev M01

DO NOT SCALE USE FIGURED DIMENSIONS ONLY



W:\000000\19117117-02_WIP\08 MODELS\01 CAD\01 PLANNING\16 RINGSEND\KeyPlans\BCIDD-ROT-GEN_KP-0016_XX_00-DR-CR-0001.dwg
 W:\000000\19117117-02_WIP\08 MODELS\01 CAD\01 PLANNING\16 RINGSEND\KeyPlans\BCIDD-ROT-GEN_KP-0016_XX_00-DR-CR-0001.dwg

Disclaimer
 a. © National Transport Authority (NTA) 2022. This drawing is confidential and the copyright in it is owned by NTA. This drawing must not be either loaned, copied or otherwise reproduced in whole or in part or used for any purpose without the prior permission of NTA.
 b. This drawing is to be used for the design element identified in the title block. Other information shown is to be considered indicative only. The drawing is to be read in conjunction with all other relevant design drawings.
 c. O.S. data used for plans are printed under © Ordnance Survey Ireland Government of Ireland. All rights reserved. Licence Number 2022/O.SI_NMA_180 National Transport Authority. All elevations are in metres and relate to O.S. Geoid Model (OSGM15) Mean Head. All Co-ordinates are in Irish Transverse Mercator Grid (ITM) as defined by OSI active local GPS station.
 d. Information concerning the position of apparatus shown on this drawing is based on the information supplied by the utility owners and/or the utility works contractor, whilst every care has been taken in the preparation of this drawing, positions should be taken as approximate and are provided for general guidance only and no representation is made by the NTA as to the accuracy, completeness, sufficiency or otherwise of this drawing and any reliance on the information or any part of it is at the recipient's risk. Recipients should not rely on this information. Any liabilities are hereby expressly disclaimed.

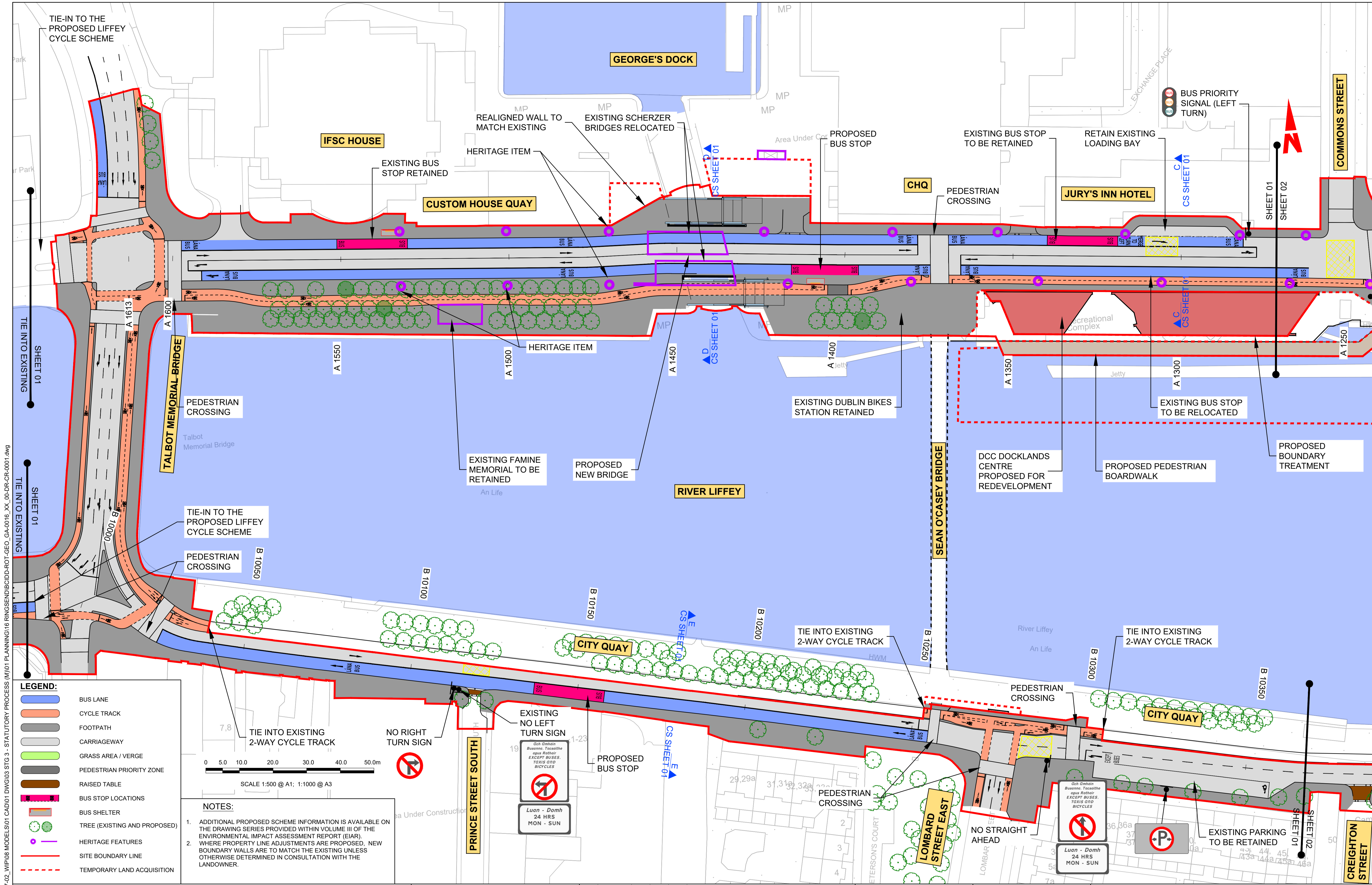
The information contained herein has been provided by the NTA but does not purport to be comprehensive or final. Recipients should not rely on the information. Neither the NTA nor any of its directors, officers, employees, agents, stakeholders or advisers make any representation or warranty as to, or accept any liability or responsibility in relation to, the adequacy, accuracy, reasonableness or completeness of the information provided as part of this document or any matter on which the information is based (including but not limited to loss or damage arising as a result of reliance on the information or any part of it). Any liabilities are hereby expressly disclaimed.

Project Ireland 2040
 Building Ireland's Future

Rev	Date	Drn	Chk'd	App'd	Description
M01	MAR 2023	CG	EOC	SMG	ISSUED FOR PHASE 4: PLANNING

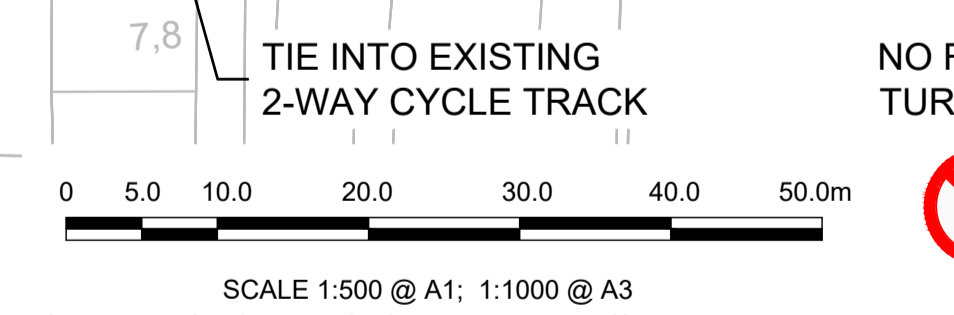
Client		Engineering Designer		Programme Title	
 Údarás Náisiúnta Iompair National Transport Authority		 IROD TYPSA		BUSCONNECTS DUBLIN CORE BUS CORRIDORS INFRASTRUCTURE WORKS	
Date	Scale	Drawn	Checked	Approved	
MAR 2023	1:10,000 @ A1 1:20,000 @ A3	CG	EOC	SMG	
Programme Code	Originator Code	QMS Code		Drawing File Name	Sheet Number
BCIDD	ROT			BCIDD-ROT-GEN_KP-0016_XX_00-DR-CR-0001	01 of 01
				Status	Rev
				A	M01

DO NOT SCALE USE FIGURED DIMENSIONS ONLY



LEGEND:

- BUS LANE
- CYCLE TRACK
- FOOTPATH
- CARRIAGEWAY
- GRASS AREA / VERGE
- PEDESTRIAN PRIORITY ZONE
- RAISED TABLE
- BUS STOP LOCATIONS
- BUS SHELTER
- TREE (EXISTING AND PROPOSED)
- HERITAGE FEATURES
- SITE BOUNDARY LINE
- TEMPORARY LAND ACQUISITION



NOTES:

- ADDITIONAL PROPOSED SCHEME INFORMATION IS AVAILABLE ON THE DRAWING SERIES PROVIDED WITHIN VOLUME III OF THE ENVIRONMENTAL IMPACT ASSESSMENT REPORT (EIAR).
- WHERE PROPERTY LINE ADJUSTMENTS ARE PROPOSED, NEW BOUNDARY WALLS ARE TO MATCH THE EXISTING UNLESS OTHERWISE DETERMINED IN CONSULTATION WITH THE LANDOWNER.

Disclaimer:

a. © National Transport Authority (NTA) 2022. This drawing is confidential and the copyright in it is owned by NTA. This drawing must not be either loaned, copied or otherwise reproduced in whole or in part or used for any purpose without the prior permission of NTA.

b. This drawing is to be used for the design element identified in the titleblock. Other information shown is to be considered indicative only. The drawing is to be read in conjunction with all other relevant design drawings.

c. O.S. data used for plans are printed under © Ordnance Survey Ireland Government of Ireland. All rights reserved. Licence Number 2022/OSI_NMA_180 National Transport Authority. All elevations are in metres and relate to OSi Geoid Model (OSGM15) Mean Head. All Co-ordinates are in Irish Transverse Mercator Grid (ITM) as defined by OSi active local GPS station.

d. Information concerning the position of apparatus shown on this drawing is based on drawings supplied by the utility owners and/or the utility works contractor, whilst every care has been taken in the preparation of this drawing, positions should be taken as approximate and are intended for general guidance only and no representation is made by the NTA as to the accuracy, completeness, sufficiency or otherwise of this information. The information contained herein does not purport to be comprehensive or final as the apparatus is subject to being altered and/or superseded. Recipients should not rely on this information. Any liabilities are hereby expressly disclaimed.

e. The information contained herein has been provided by the NTA but does not purport to be comprehensive or final. Recipients should not rely on the information. Neither the NTA nor any of its directors, officers, employees, agents, stakeholders or advisers make any representation or warranty as to, or accept any liability or responsibility in relation to, the adequacy, accuracy, reasonableness or completeness of the information provided as part of this document or any matter on which the information is based (including but not limited to loss or damage arising as a result of reliance by recipients on the information or any part of it). Any liabilities are hereby expressly disclaimed.

Rev	Date	Drn	Chk'd	App'd	Description
M01	MAR 2023	CG	EOC	SMG	ISSUE FOR PHASE 4: PLANNING

Client: NTA
Údarás Náisiúnta Iompair
National Transport Authority

Engineering Designer: IROD
TYPSA

Date: MAR 2023
Scale: 1:500 @ A1, 1:1000 @ A3
Drawn: CG, Checked: EOC, Approved: SMG

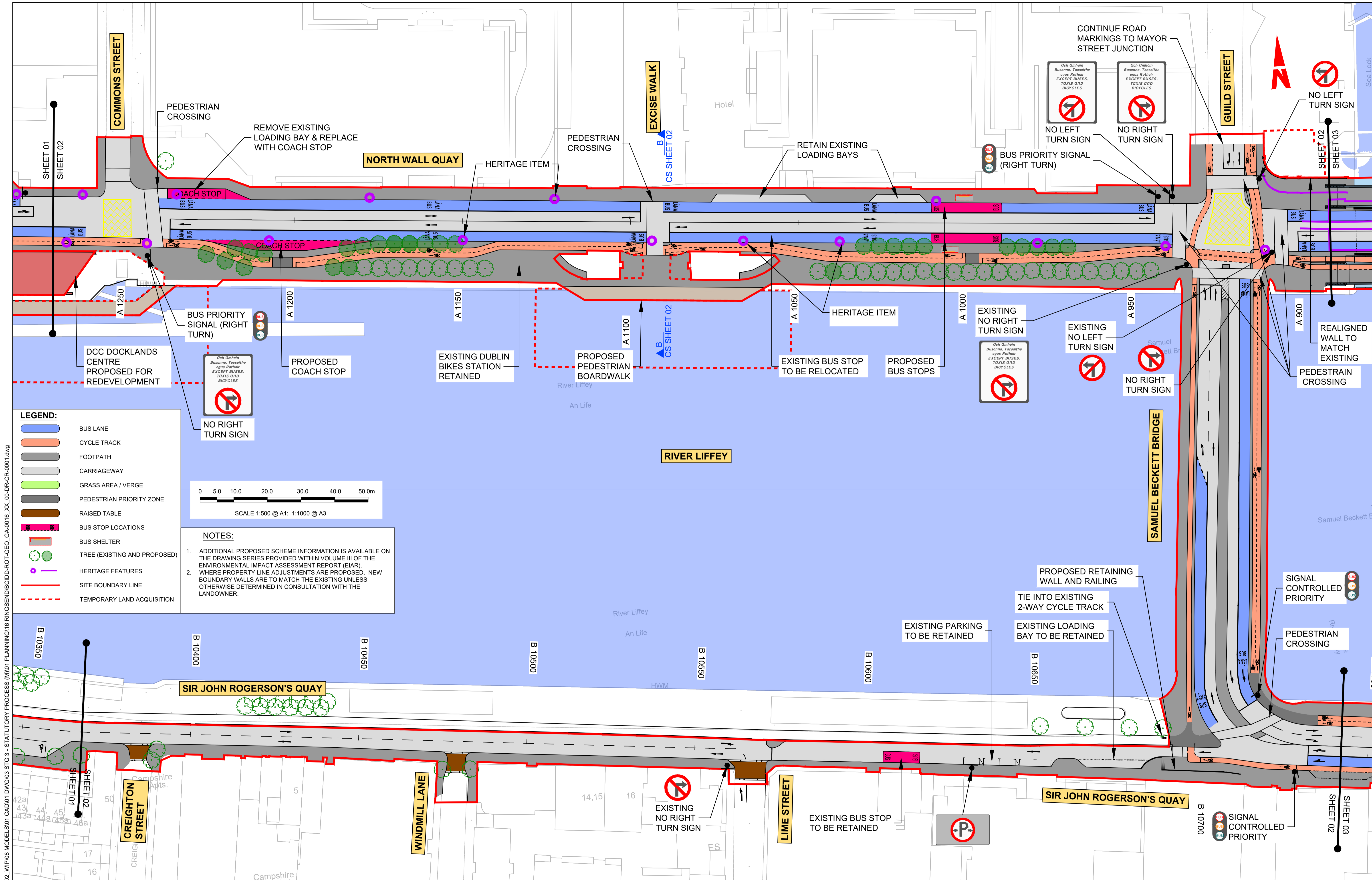
Programme Code: BCIDD, Originator Code: ROT, QMS Code:

Programme Title: BUSCONNECTS DUBLIN
CORE BUS CORRIDORS INFRASTRUCTURE WORKS

Drawing Title: RINGSEND TO CITY CENTRE CORE BUS CORRIDOR SCHEME
GENERAL ARRANGEMENT

Drawing File Name: BCIDD-ROT-GEO_GA-0016_XX_00-DR-CR-0001
Sheet Number: 01 of 12
Status: A
Rev: M01

DO NOT SCALE USE FIGURED DIMENSIONS ONLY



LEGEND:

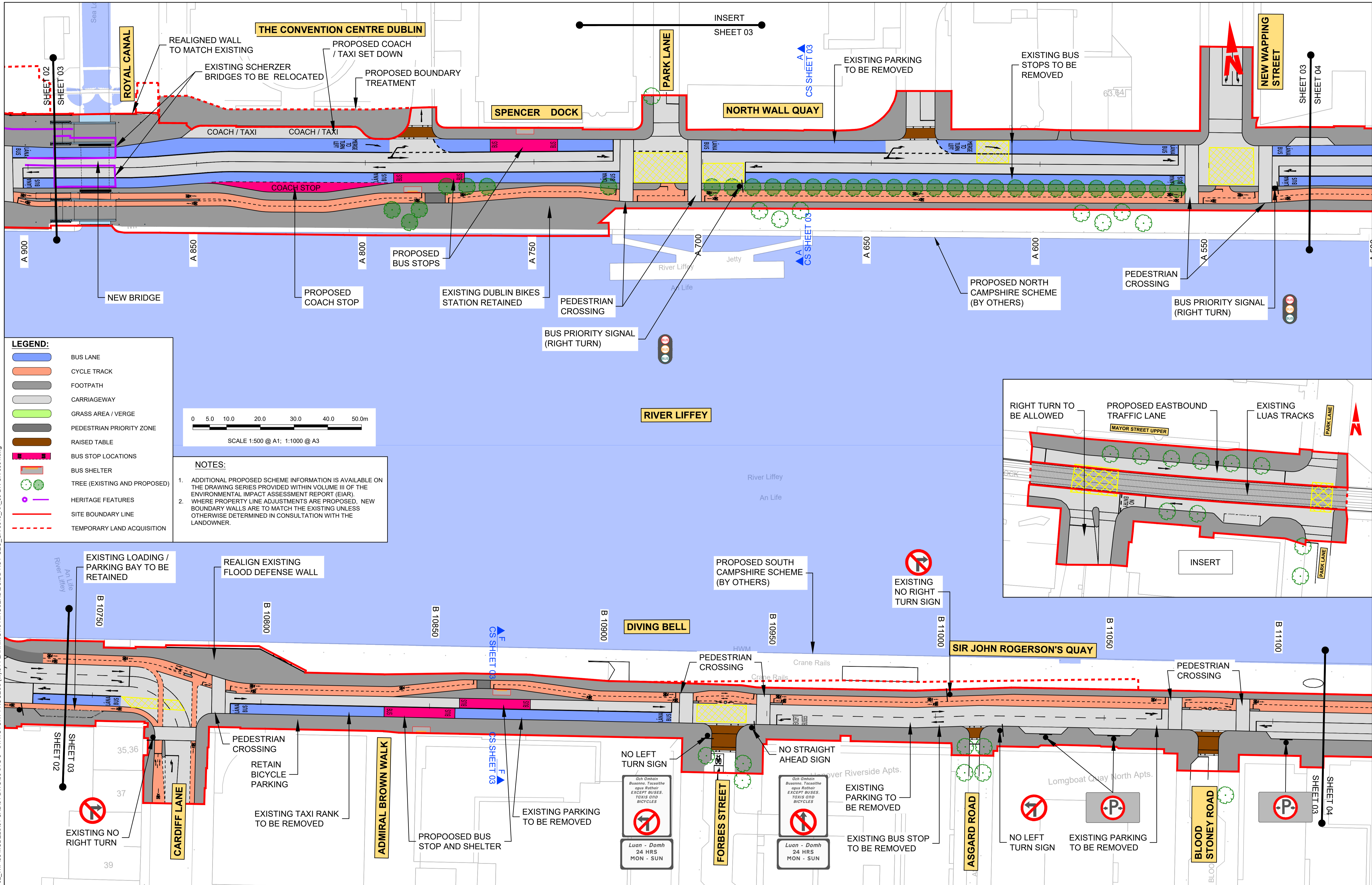
- BUS LANE
- CYCLE TRACK
- FOOTPATH
- CARRIAGEWAY
- GRASS AREA / VERGE
- PEDESTRIAN PRIORITY ZONE
- RAISED TABLE
- BUS STOP LOCATIONS
- BUS SHELTER
- TREE (EXISTING AND PROPOSED)
- HERITAGE FEATURES
- SITE BOUNDARY LINE
- TEMPORARY LAND ACQUISITION

NOTES:

- ADDITIONAL PROPOSED SCHEME INFORMATION IS AVAILABLE ON THE DRAWING SERIES PROVIDED WITHIN VOLUME III OF THE ENVIRONMENTAL IMPACT ASSESSMENT REPORT (EIAR).
- WHERE PROPERTY LINE ADJUSTMENTS ARE PROPOSED, NEW BOUNDARY WALLS ARE TO MATCH THE EXISTING UNLESS OTHERWISE DETERMINED IN CONSULTATION WITH THE LANDOWNER.

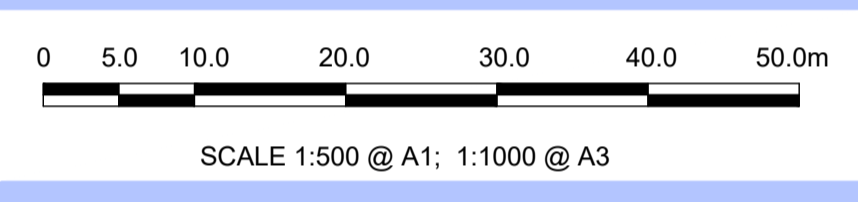
W:\000000\191717-02 - STATUTORY PROCESS (M)\01 PLANNING\16 RINGSEND\BCIDD-ROT-GEO_GA-0016_XX_00-DR-CR-0001.dwg
 W:\000000\191717-02 - STATUTORY PROCESS (M)\01 PLANNING\16 RINGSEND\BCIDD-ROT-GEO_GA-0016_XX_00-DR-CR-0001.dwg

<p>Disclaimer:</p> <p>a. © National Transport Authority (NTA) 2022. This drawing is confidential and the copyright in it is owned by NTA. This drawing must not be either loaned, copied or otherwise reproduced in whole or in part or used for any purpose without the prior permission of NTA.</p> <p>b. This drawing is to be used for the design element identified in the titleblock. Other information shown is to be considered indicative only. The drawing is to be read in conjunction with all other relevant design drawings.</p> <p>c. O.S. data used for plans are printed under © Ordnance Survey Ireland Government of Ireland. All rights reserved. Licence Number 2022/OSI_NMA_180 National Transport Authority. All elevations are in metres and relate to OSI Geoid Model (OSGM15) Mean Head. All Co-ordinates are in Irish Transverse Mercator Grid (ITM) as defined by OSI active local GPS station.</p> <p>d. Information concerning the position of apparatus shown on this drawing is based on drawings supplied by the utility owners and/or the utility works contractor, whilst every care has been taken in the preparation of this drawing, positions should be taken as approximate and are intended for general guidance only and no representation is made by the NTA as to the accuracy, completeness, sufficiency or otherwise of this information. The information contained herein does not purport to be comprehensive or final as the apparatus is subject to being altered and/or superceded. Recipients should not rely on this information. Any liabilities are hereby expressly disclaimed.</p>		<p>The information contained herein has been provided by the NTA but does not purport to be comprehensive or final. Recipients should not rely on the information. Neither the NTA nor any of its directors, officers, employees, agents, stakeholders or advisers make any representation or warranty as to, or accept any liability or responsibility in relation to, the adequacy, accuracy, reasonableness or completeness of the information provided as part of this document or any matter on which the information is based (including but not limited to loss or damage arising as a result of reliance by recipients on the information or any part of it). Any liabilities are hereby expressly disclaimed.</p>		<p>Rev M01 Date MAR 2023 Drm CG Chk'd EOC App'd SMG Description ISSUE FOR PHASE 4: PLANNING</p>		<p>Client NTA Údarás Náisiúnta Iompair National Transport Authority</p>		<p>Engineering Designer CIROD TYPSA</p>			<p>Programme Title BUSCONNECTS DUBLIN CORE BUS CORRIDORS INFRASTRUCTURE WORKS</p>			
<p>Date MAR 2023 Scale 1:500 @ A1 1:1,000 @ A3</p>		<p>Drawn CG Checked EOC Approved SMG</p>		<p>Programme Code BCIDD Originator Code ROT</p>		<p>QMS Code</p>		<p>Drawing Title RINGSEND TO CITY CENTRE CORE BUS CORRIDOR SCHEME GENERAL ARRANGEMENT</p>						
<p>Drawing File Name BCIDD-ROT-GEO_GA-0016_XX_00-DR-CR-0002</p>		<p>Sheet Number 02 of 12</p>		<p>Status A</p>		<p>Rev M01</p>		<p>DO NOT SCALE USE FIGURED DIMENSIONS ONLY</p>						



LEGEND:

- BUS LANE
- CYCLE TRACK
- FOOTPATH
- CARRIAGEWAY
- GRASS AREA / VERGE
- PEDESTRIAN PRIORITY ZONE
- RAISED TABLE
- BUS STOP LOCATIONS
- BUS SHELTER
- TREE (EXISTING AND PROPOSED)
- HERITAGE FEATURES
- SITE BOUNDARY LINE
- TEMPORARY LAND ACQUISITION

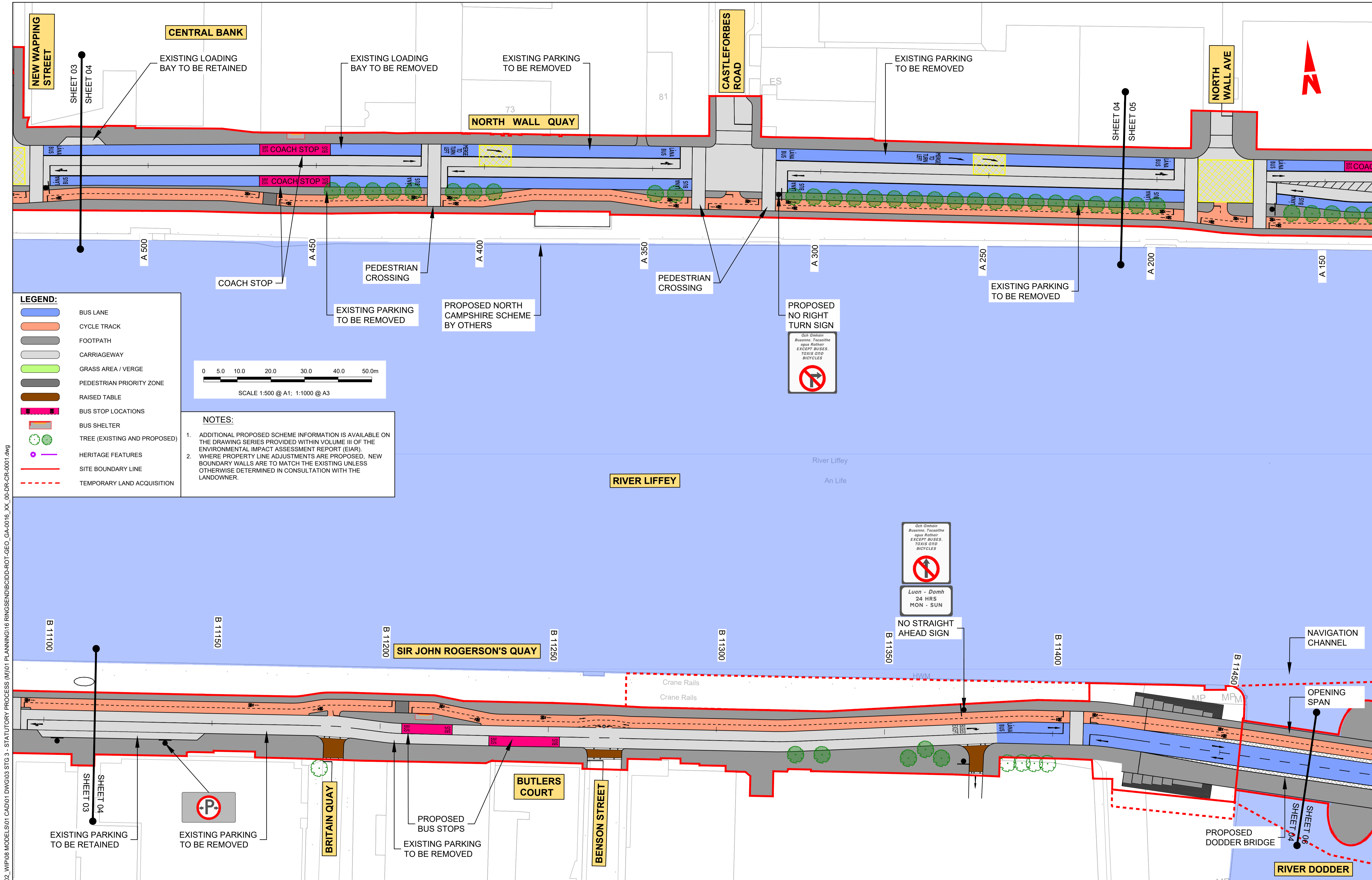


NOTES:

- ADDITIONAL PROPOSED SCHEME INFORMATION IS AVAILABLE ON THE DRAWING SERIES PROVIDED WITHIN VOLUME III OF THE ENVIRONMENTAL IMPACT ASSESSMENT REPORT (EIA).
- WHERE PROPERTY LINE ADJUSTMENTS ARE PROPOSED, NEW BOUNDARY WALLS ARE TO MATCH THE EXISTING UNLESS OTHERWISE DETERMINED IN CONSULTATION WITH THE LANDOWNER.

<p><small>Disclaimer</small></p> <p>a. © National Transport Authority (NTA) 2022. This drawing is confidential and the copyright in it is owned by NTA. This drawing must not be either loaned, copied or otherwise reproduced in whole or in part or used for any purpose without the prior permission of NTA.</p> <p>b. This drawing is to be used for the design element identified in the titleblock. Other information shown is to be considered indicative only. The drawing is to be read in conjunction with all other relevant design drawings.</p> <p>c. O.S. data used for plans are printed under © Ordnance Survey Ireland Government of Ireland. All rights reserved. Licence Number 2022/OSI_NMA_180 National Transport Authority. All elevations are in metres and relate to OSi Geoid Model (OSGM15) Mean Head. All Co-ordinates are in Irish Transverse Mercator Grid (ITM) as defined by OSI active local GPS station.</p> <p>d. Information concerning the position of apparatus shown on this drawing is based on drawings supplied by the utility owners and/or the utility works contractor, whilst every care has been taken in the preparation of this drawing, positions should be taken as approximate and are intended for general guidance only and no representation is made by the NTA as to the accuracy, completeness, sufficiency or otherwise of this drawing and the position of the apparatus. The information contained herein does not purport to be comprehensive or final as the apparatus is subject to being altered and/or superceded. Recipients should not rely on this information. Any liabilities are hereby expressly disclaimed.</p>	<p><small>The information contained herein has been provided by the NTA but does not purport to be comprehensive or final. Recipients should not rely on the information. Neither the NTA nor any of its directors, officers, employees, agents, stakeholders or advisers make any representation or warranty as to, or accept any liability or responsibility in relation to, the adequacy, accuracy, reasonableness or completeness of the information provided as part of this document or any matter on which the information is based (including but not limited to loss or damage arising as a result of reliance by recipients on the information or any part of it). Any liabilities are hereby expressly disclaimed.</small></p>	<table border="1" style="width: 100%; border-collapse: collapse;"> <thead> <tr> <th>Rev</th> <th>Date</th> <th>Drn</th> <th>Chk'd</th> <th>App'd</th> <th>Description</th> </tr> </thead> <tbody> <tr> <td>M01</td> <td>MAR 2023</td> <td>CG</td> <td>EOC</td> <td>SMG</td> <td>ISSUE FOR PHASE 4: PLANNING</td> </tr> </tbody> </table>	Rev	Date	Drn	Chk'd	App'd	Description	M01	MAR 2023	CG	EOC	SMG	ISSUE FOR PHASE 4: PLANNING	<p>Client</p> <p>NTA Údarás Náisiúnta Iompair National Transport Authority</p> <p>Engineering Designer</p> <p>CIROD CIROD TYPSA</p>	<p>Programme Title</p> <p>BUSCONNECTS DUBLIN CORE BUS CORRIDORS INFRASTRUCTURE WORKS</p> <p>Drawing Title</p> <p>RINGSEND TO CITY CENTRE CORE BUS CORRIDOR SCHEME GENERAL ARRANGEMENT</p>
Rev	Date	Drn	Chk'd	App'd	Description											
M01	MAR 2023	CG	EOC	SMG	ISSUE FOR PHASE 4: PLANNING											
<p>Date: MAR 2023</p> <p>Scale: 1:500 @ A1 1:1,000 @ A3</p> <p>Programme Code: BCIDD</p> <p>Originator Code: ROT</p> <p>QMS Code</p>			<p>Drawn: CG</p> <p>Checked: EOC</p> <p>Approved: SMG</p>		<p>Drawing File Name: BCIDD-ROT-GEO_GA-0016_XX_00-DR-CR-0003</p> <p>Sheet Number: 03 of 12</p> <p>Status: A</p> <p>Rev: M01</p>											

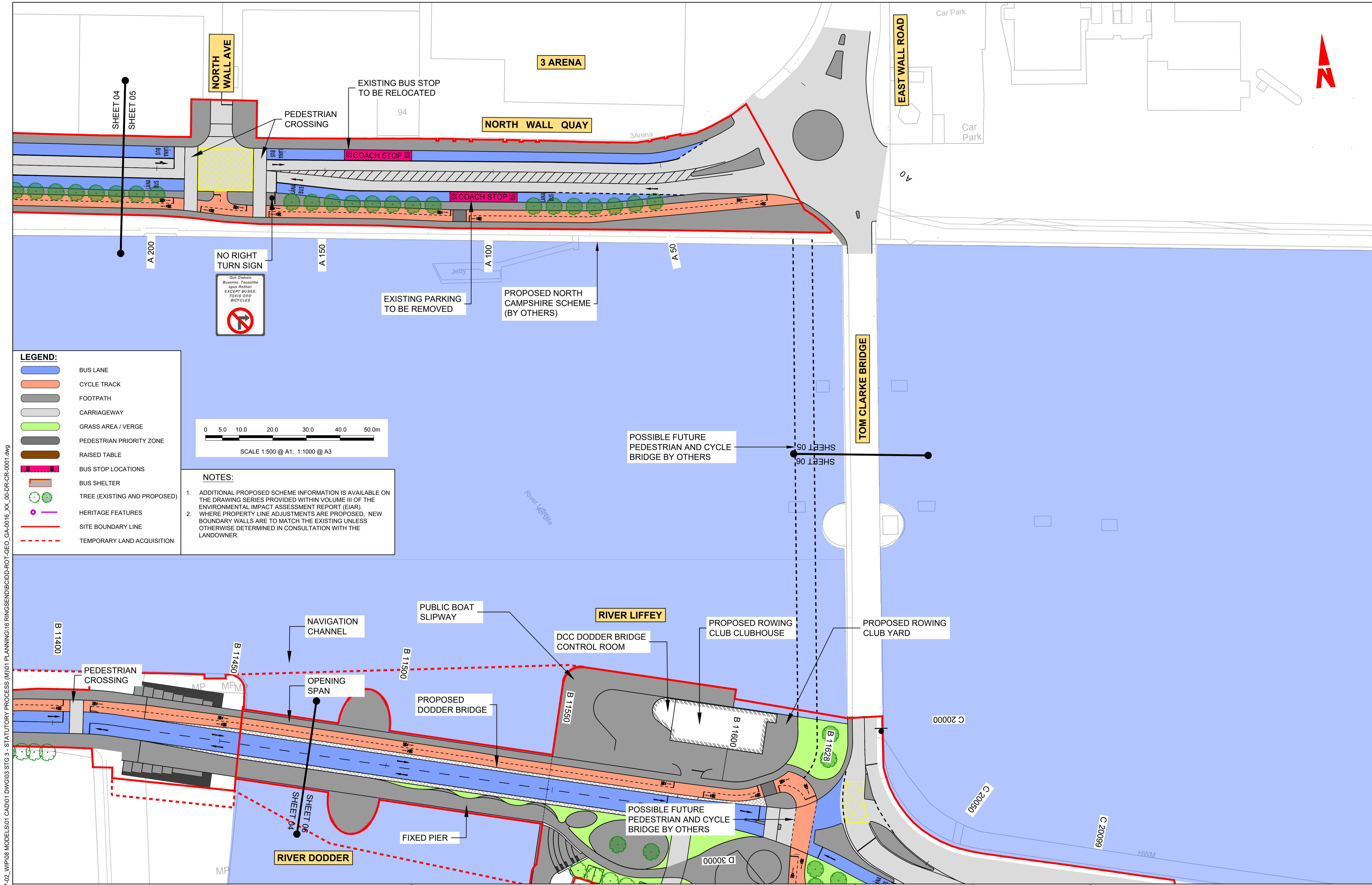
DO NOT SCALE USE FIGURED DIMENSIONS ONLY



\\vodubp1u2019191717-02_WIP08 MODELS01 CAD01 DWG003 STG 3 - STATUTORY PROCESS (M)01 PLANNING\16 RINGSEND\BCIDD-ROT-GEO_GA-0016_XX_00-DR-CR-0001.dwg

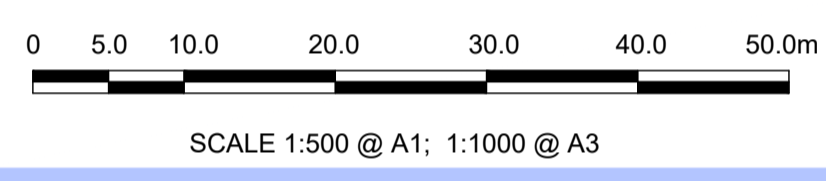
<p>Disclaimer</p> <p>a. © National Transport Authority (NTA) 2022. This drawing is confidential and the copyright in it is owned by NTA. This drawing must not be either loaned, copied or otherwise reproduced in whole or in part or used for any purpose without the prior permission of NTA.</p> <p>b. This drawing is to be used for the design element identified in the titleblock. Other information shown is to be considered indicative only. The drawing is to be read in conjunction with all other relevant design drawings.</p> <p>c. O.S. data used for plans are printed under © Ordnance Survey Ireland Government of Ireland. All rights reserved. Licence Number 2022/OSI_NMA_180 National Transport Authority. All elevations are in metres and relate to OSI Geoid Model (OSGM15) Mean Head. All Co-ordinates are in Irish Transverse Mercator Grid (ITM) as defined by OSI active local GPS station.</p> <p>d. Information concerning the position of apparatus shown on this drawing is based on drawings supplied by the utility owners and/or the utility works contractor, whilst every care has been taken in the preparation of this drawing, positions should be taken as approximate and are intended for general guidance only and no representation is made by the NTA as to the accuracy, completeness, sufficiency or otherwise of this drawing and the position of the apparatus. The information contained herein does not purport to be comprehensive or final as the apparatus is subject to being altered and/or superceded. Recipients should not rely on this information. Any liabilities are hereby expressly disclaimed.</p> <p>e. The information contained herein has been provided by the NTA but does not purport to be comprehensive or final. Recipients should not rely on the information. Neither the NTA nor any of its directors, officers, employees, agents, stakeholders or advisers make any representation or warranty as to, or accept any liability or responsibility in relation to, the adequacy, accuracy, reasonableness or completeness of the information provided as part of this document or any matter on which the information is based (including but not limited to loss or damage arising as a result of reliance by recipients on the information or any part of it). Any liabilities are hereby expressly disclaimed.</p>		<p>Rev M01</p> <p>Date MAR 2023</p> <p>Drm CG</p> <p>Chk'd EOC</p> <p>App'd SMG</p> <p>Description ISSUE FOR PHASE 4: PLANNING</p>		<p>Client</p> <p>NTA</p> <p>Údarás Náisiúnta Iompair</p> <p>National Transport Authority</p>		<p>Engineering Designer</p> <p>CIROD</p> <p>TYPSA</p>			<p>Programme Title</p> <p>BUSCONNECTS DUBLIN</p> <p>CORE BUS CORRIDORS INFRASTRUCTURE WORKS</p>			
<p>Date MAR 2023</p> <p>Scale 1:500 @ A1</p> <p>1:1,000 @ A3</p> <p>Programme Code BCIDD</p> <p>Originator Code ROT</p>		<p>Drawn CG</p> <p>Checked EOC</p> <p>Approved SMG</p> <p>QMS Code</p>			<p>Drawing Title</p> <p>RINGSEND TO CITY CENTRE CORE BUS CORRIDOR SCHEME</p> <p>GENERAL ARRANGEMENT</p>							
<p>Drawing File Name</p> <p>BCIDD-ROT-GEO_GA-0016_XX_00-DR-CR-0004</p>		<p>Sheet Number</p> <p>04 of 12</p>		<p>Status</p> <p>A</p>		<p>Rev</p> <p>M01</p>						

DO NOT SCALE USE FIGURED DIMENSIONS ONLY



LEGEND:

- BUS LANE
- CYCLE TRACK
- FOOTPATH
- CARRIAGEWAY
- GRASS AREA / VERGE
- PEDESTRIAN PRIORITY ZONE
- RAISED TABLE
- BUS STOP LOCATIONS
- BUS SHELTER
- TREE (EXISTING AND PROPOSED)
- HERITAGE FEATURES
- SITE BOUNDARY LINE
- TEMPORARY LAND ACQUISITION



- NOTES:**
- ADDITIONAL PROPOSED SCHEME INFORMATION IS AVAILABLE ON THE DRAWING SERIES PROVIDED WITHIN VOLUME III OF THE ENVIRONMENTAL IMPACT ASSESSMENT REPORT (EIAR).
 - WHERE PROPERTY LINE ADJUSTMENTS ARE PROPOSED, NEW BOUNDARY WALLS ARE TO MATCH THE EXISTING UNLESS OTHERWISE DETERMINED IN CONSULTATION WITH THE LANDOWNER.

\\nodubp1u20191917117-02_WIP08 MODELS01 CAD01 DWG003 STG 3 - STATUTORY PROCESS (M)01 PLANNING\16 RINGSEND\BCIDD-ROT-GEO_GA-0016_XX_00-DR-CR-0001.dwg

Disclaimer:
 a. © National Transport Authority (NTA) 2022. This drawing is confidential and the copyright in it is owned by NTA. This drawing must not be either loaned, copied or otherwise reproduced in whole or in part or used for any purpose without the prior permission of NTA.
 b. This drawing is to be used for the design element identified in the titlebox. Other information shown is to be considered indicative only. The drawing is to be read in conjunction with all other relevant design drawings.
 c. O.S. data used for plans are printed under © Ordnance Survey Ireland Government of Ireland. All rights reserved. Licence Number 2022/OSI_NMA_180 National Transport Authority. All elevations are in metres and relate to OSI Geoid Model (OSGM15) Mean Head. All Co-ordinates are in Irish

Transverse Mercator Grid (ITM) as defined by OSI active local GPS station.
 Information concerning the position of apparatus shown on this drawing is based on drawings supplied by the utility owners and/or the utility works contractor, whilst every care has been taken in the preparation of this drawing, positions should be taken as approximate and are intended for general guidance only and no representation is made by the NTA as to the accuracy, completeness, sufficiency or otherwise of this drawing and the position of the apparatus. The information contained herein does not purport to be comprehensive or final as the apparatus is subject to being altered and/or superseded. Recipients should not rely on this information. Any liabilities are hereby expressly disclaimed.

The information contained herein has been provided by the NTA but does not purport to be comprehensive or final. Recipients should not rely on the information. Neither the NTA nor any of its directors, officers, employees, agents, stakeholders or advisers make any representation or warranty as to, or accept any liability or responsibility in relation to, the adequacy, accuracy, reasonableness or completeness of the information provided as part of this document or any matter on which the information is based (including but not limited to loss or damage arising as a result of reliance by recipients on the information or any part of it). Any liabilities are hereby expressly disclaimed.



Rev	Date	Drm	Chk'd	App'd	Description
M01	MAR 2023	CG	EOC	SMG	ISSUE FOR PHASE 4: PLANNING

Client: **NTA** Údarás Náisiúnta Iompair National Transport Authority

Engineering Designer: **CIROD** TYPSA

Date: MAR 2023 Scale: 1:500 @ A1, 1:1,000 @ A3

Drawn: CG, Checked: EOC, Approved: SMG

Programme Code: BCIDD, Originator Code: ROT, QMS Code:

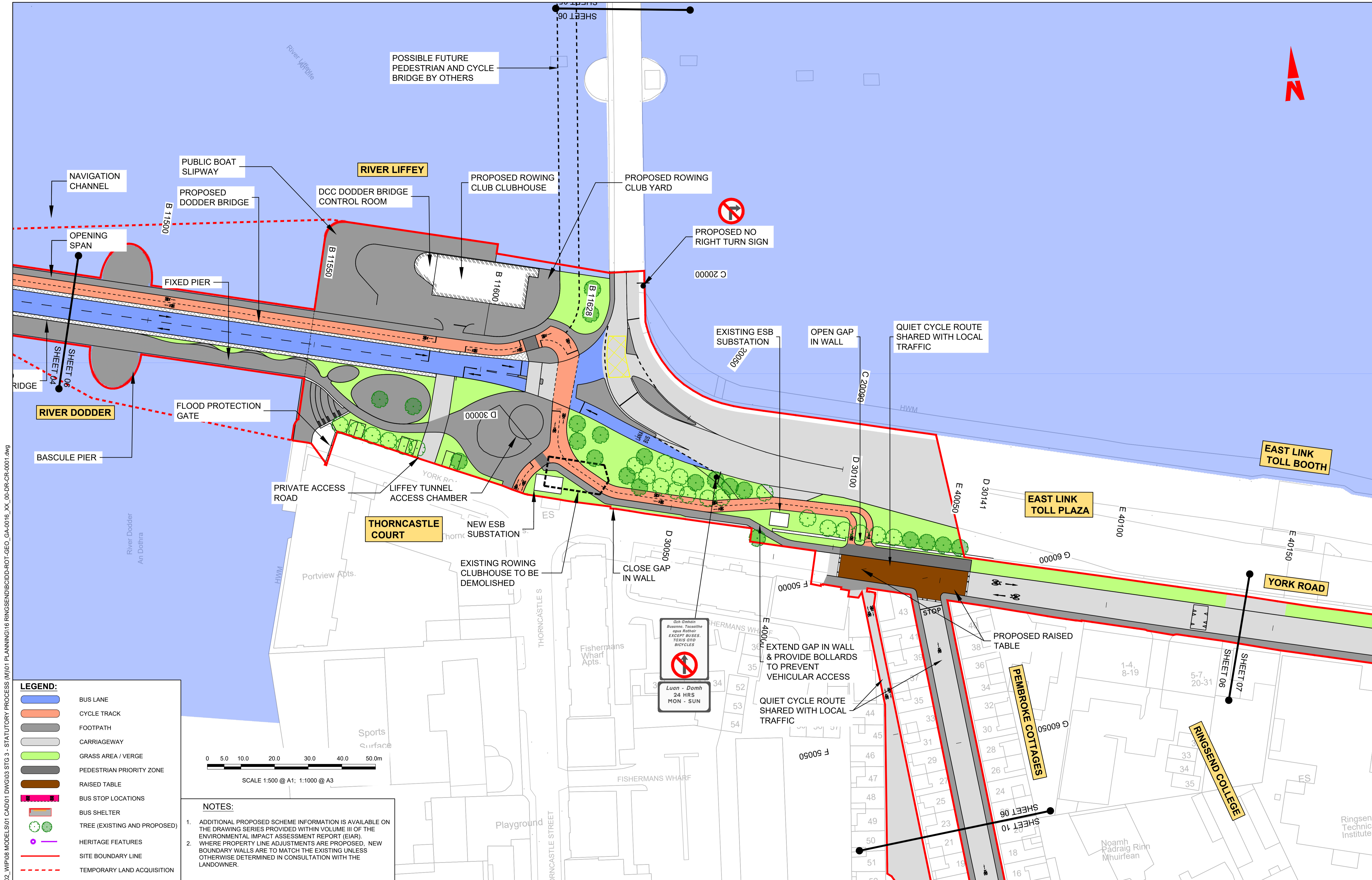
Programme Title: **BUSCONNECTS DUBLIN CORE BUS CORRIDORS INFRASTRUCTURE WORKS**

Drawing Title: RINGSEND TO CITY CENTRE CORE BUS CORRIDOR SCHEME GENERAL ARRANGEMENT

Drawing File Name: BCIDD-ROT-GEO_GA-0016_XX_00-DR-CR-0005

Sheet Number: 05 of 12, Status: A, Rev: M01

DO NOT SCALE USE FIGURED DIMENSIONS ONLY



W:\000000\1917171717-02_WIP\08 MODELS\01 CAD\01 PLANNING\16 RINGSEND\BCIDD-ROT-GEO_GA-0016_XX_00-DR-CR-0001.dwg
 00-DR-CR-0001.dwg

LEGEND:

- BUS LANE
- CYCLE TRACK
- FOOTPATH
- CARRIAGEWAY
- GRASS AREA / VERGE
- PEDESTRIAN PRIORITY ZONE
- RAISED TABLE
- BUS STOP LOCATIONS
- BUS SHELTER
- TREE (EXISTING AND PROPOSED)
- HERITAGE FEATURES
- SITE BOUNDARY LINE
- TEMPORARY LAND ACQUISITION

NOTES:

1. ADDITIONAL PROPOSED SCHEME INFORMATION IS AVAILABLE ON THE DRAWING SERIES PROVIDED WITHIN VOLUME III OF THE ENVIRONMENTAL IMPACT ASSESSMENT REPORT (EIAR).
2. WHERE PROPERTY LINE ADJUSTMENTS ARE PROPOSED, NEW BOUNDARY WALLS ARE TO MATCH THE EXISTING UNLESS OTHERWISE DETERMINED IN CONSULTATION WITH THE LANDOWNER.

Disclaimer:
 a. © National Transport Authority (NTA) 2022. This drawing is confidential and the copyright in it is owned by NTA. This drawing must not be either loaned, copied or otherwise reproduced in whole or in part or used for any purpose without the prior permission of NTA.
 b. This drawing is to be used for the design element identified in the titleblock. Other information shown is to be considered indicative only. The drawing is to be read in conjunction with all other relevant design drawings.
 c. O.S. data used for plans are printed under © Ordnance Survey Ireland Government of Ireland. All rights reserved. Licence Number 2022/OSI_NMA_180 National Transport Authority. All elevations are in metres and relate to OSI Geoid Model (OSGM15) Mean Head. All Co-ordinates are in Irish Transverse Mercator Grid (ITM) as defined by OSI active local GPS station.
 d. Information concerning the position of apparatus shown on this drawing is based on drawings supplied by the utility owners and/or the utility works contractor, whilst every care has been taken in the preparation of this drawing, positions should be taken as approximate and are intended for general guidance only and no representation is made by the NTA as to the accuracy, completeness, sufficiency or otherwise of this information. The information is subject to being altered and/or superseded. Recipients should not rely on this information. Any liabilities are hereby expressly disclaimed.

The information contained herein has been provided by the NTA but does not purport to be comprehensive or final. Recipients should not rely on the information. Neither the NTA nor any of its directors, officers, employees, agents, stakeholders or advisers make any representation or warranty as to, or accept any liability or responsibility in relation to, the adequacy, accuracy, reasonableness or completeness of the information provided as part of this document or any matter on which the information is based (including but not limited to loss or damage arising as a result of reliance by recipients on the information or any part of it). Any liabilities are hereby expressly disclaimed.

Project Ireland 2040
 Building Ireland's Future


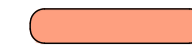











Rev	Date	Dwn	Chk'd	App'd	Description
M01	MAR 2023	CG	EOC	SMG	ISSUE FOR PHASE 4: PLANNING

Client	Engineering Designer	Programme Title
NTA Údarás Náisiúnta Iompair National Transport Authority	CIROD TYPSA	BUSCONNECTS DUBLIN CORE BUS CORRIDORS INFRASTRUCTURE WORKS
Date	Scale	Drawn
MAR 2023	1:500 @ A1 1:1,000 @ A3	CG
Programme Code	Originator Code	Checked
BCIDD	ROT	EOC
		Approved
		SMG

Drawing Title	Sheet Number	Status	Rev
RINGSEND TO CITY CENTRE CORE BUS CORRIDOR SCHEME GENERAL ARRANGEMENT	06 of 12	A	M01
Drawing File Name	Sheet Number	Status	Rev
BCIDD-ROT-GEO_GA-0016_XX_00-DR-CR-0006	06 of 12	A	M01

DO NOT SCALE USE FIGURED DIMENSIONS ONLY

LEGEND:

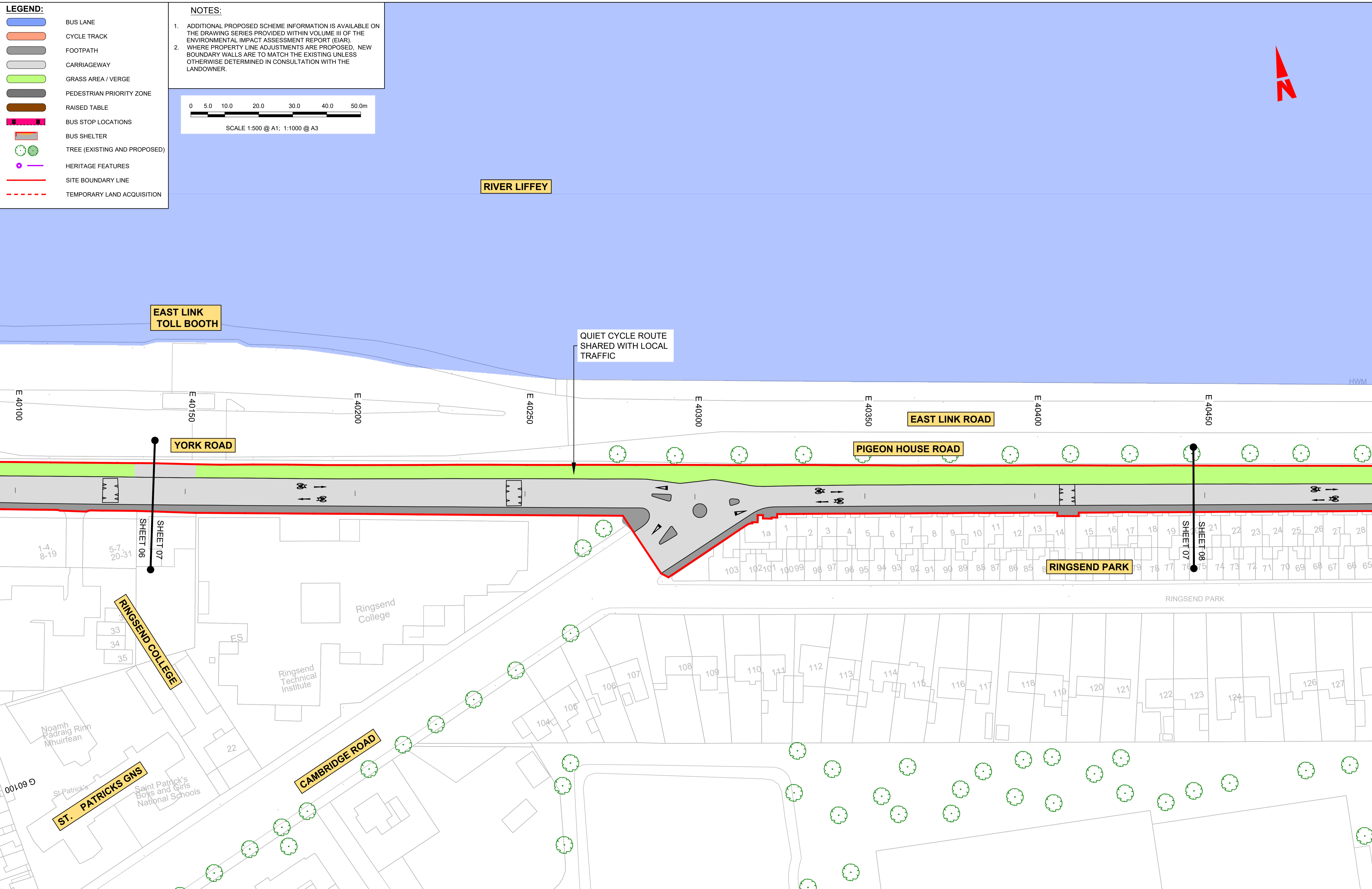
-  BUS LANE
-  CYCLE TRACK
-  FOOTPATH
-  CARRIAGEWAY
-  GRASS AREA / VERGE
-  PEDESTRIAN PRIORITY ZONE
-  RAISED TABLE
-  BUS STOP LOCATIONS
-  BUS SHELTER
-  TREE (EXISTING AND PROPOSED)
-  HERITAGE FEATURES
-  SITE BOUNDARY LINE
-  TEMPORARY LAND ACQUISITION

NOTES:

1. ADDITIONAL PROPOSED SCHEME INFORMATION IS AVAILABLE ON THE DRAWING SERIES PROVIDED WITHIN VOLUME III OF THE ENVIRONMENTAL IMPACT ASSESSMENT REPORT (EIAR).
2. WHERE PROPERTY LINE ADJUSTMENTS ARE PROPOSED, NEW BOUNDARY WALLS ARE TO MATCH THE EXISTING UNLESS OTHERWISE DETERMINED IN CONSULTATION WITH THE LANDOWNER.

0 5.0 10.0 20.0 30.0 40.0 50.0m

SCALE 1:500 @ A1; 1:1000 @ A3



\\nodub\p\11\2019\117117-02_WIP\08 MODELS\01 CAD\01 DWG\03 STG 3 - STATUTORY PROCESS (M)\01 PLANNING\16 RINGSEND\BCIDD-ROT-GEO_GA-0016_XX_00-DR-CR-0001.dwg

Disclaimer

a. © National Transport Authority (NTA) 2022. This drawing is confidential and the copyright in it is owned by NTA. This drawing must not be either loaned, copied or otherwise reproduced in whole or in part or used for any purpose without the prior permission of NTA.

b. This drawing is to be used for the design element identified in the titleblock. Other information shown is to be considered indicative only. The drawing is to be read in conjunction with all other relevant design drawings.

c. O.S. data used for plans are printed under © Ordnance Survey Ireland Government of Ireland. All rights reserved. Licence Number 2022/OSI_NMA_180 National Transport Authority. All elevations are in metres and relate to OSI Geoid Model (OSGM15) Mean Head. All Co-ordinates are in Irish Transverse Mercator Grid (ITM) as defined by OSI active local GPS station.

d. Information concerning the position of apparatus shown on this drawing is based on drawings supplied by the utility owners and/or the utility works contractor, whilst every care has been taken in the preparation of this drawing, positions should be taken as approximate and are intended for general guidance only and no representation is made by the NTA as to the accuracy, completeness, sufficiency or otherwise of this drawing and the position of the apparatus. The information contained herein does not purport to be comprehensive or final as the apparatus is subject to being altered and/or superseded. Recipients should not rely on this information. Any liabilities are hereby expressly disclaimed.

e. The information contained herein has been provided by the NTA but does not purport to be comprehensive or final. Recipients should not rely on the information. Neither the NTA nor any of its directors, officers, employees, agents, stakeholders or advisers make any representation or warranty as to, or accept any liability or responsibility in relation to, the adequacy, accuracy, reasonableness or completeness of the information provided as part of this document or any matter on which the information is based (including but not limited to loss or damage arising as a result of reliance by recipients on the information or any part of it). Any liabilities are hereby expressly disclaimed.

Rev	Date	Drn	Chk'd	App'd	Description
M01	MAR 2023	CG	EOC	SMG	ISSUE FOR PHASE 4: PLANNING

Client: **NTA**
Údarás Náisiúnta Iompair
National Transport Authority

Engineering Designer: **CIROD**
TYPSA

Date: MAR 2023 | Scale: 1:500 @ A1, 1:1,000 @ A3 | Drawn: CG | Checked: EOC | Approved: SMG

Programme Code: BCIDD | Originator Code: ROT | QMS Code:

Programme Title: BUSCONNECTS DUBLIN CORE BUS CORRIDORS INFRASTRUCTURE WORKS			
Drawing Title: RINGSEND TO CITY CENTRE CORE BUS CORRIDOR SCHEME GENERAL ARRANGEMENT			
Drawing File Name: BCIDD-ROT-GEO_GA-0016_XX_00-DR-CR-0007	Sheet Number: 07 of 12	Status: A	Rev: M01

DO NOT SCALE USE FIGURED DIMENSIONS ONLY

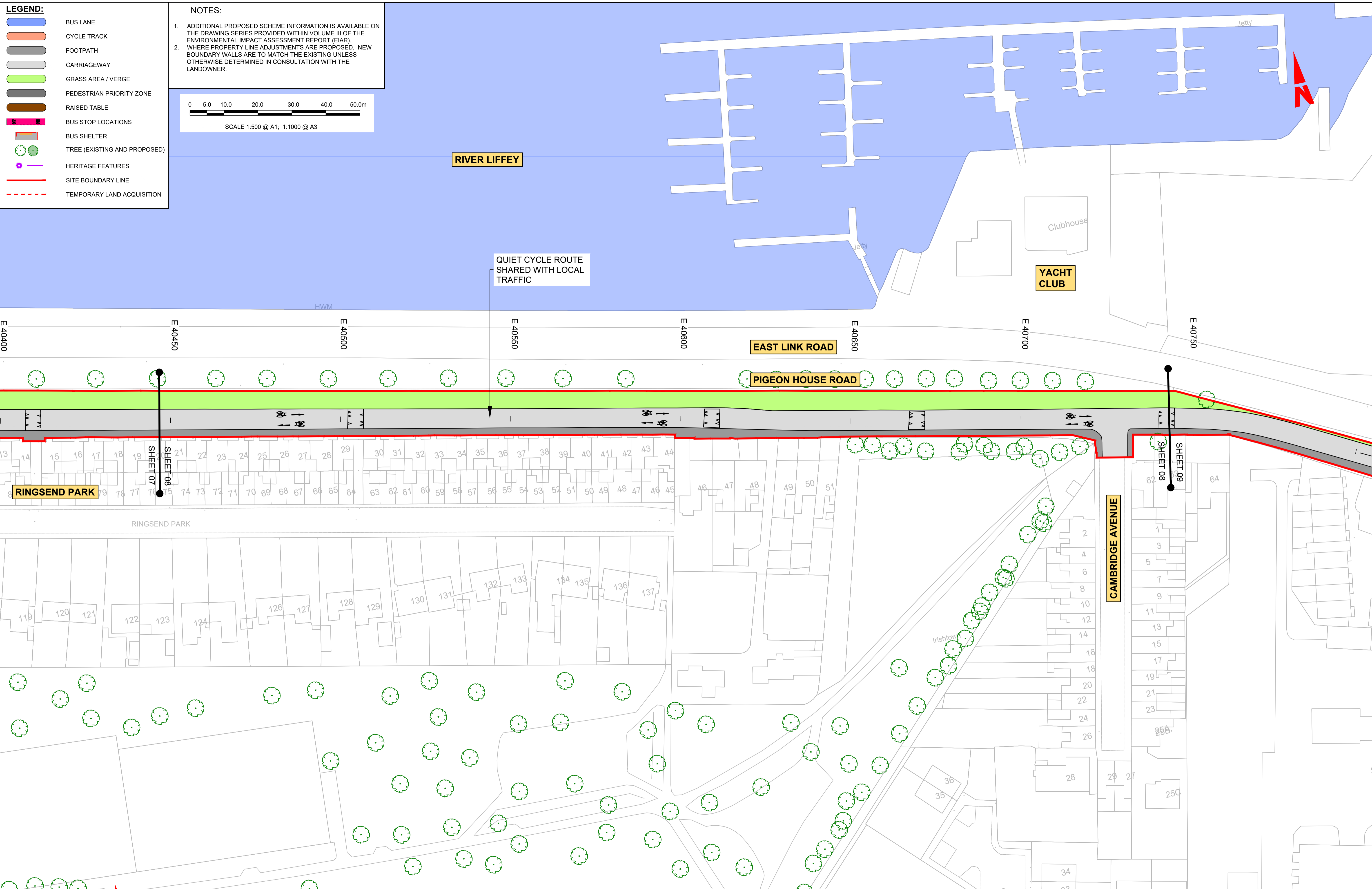
LEGEND:

- BUS LANE
- CYCLE TRACK
- FOOTPATH
- CARRIAGEWAY
- GRASS AREA / VERGE
- PEDESTRIAN PRIORITY ZONE
- RAISED TABLE
- BUS STOP LOCATIONS
- BUS SHELTER
- TREE (EXISTING AND PROPOSED)
- HERITAGE FEATURES
- SITE BOUNDARY LINE
- TEMPORARY LAND ACQUISITION

NOTES:

1. ADDITIONAL PROPOSED SCHEME INFORMATION IS AVAILABLE ON THE DRAWING SERIES PROVIDED WITHIN VOLUME III OF THE ENVIRONMENTAL IMPACT ASSESSMENT REPORT (EIAR).
2. WHERE PROPERTY LINE ADJUSTMENTS ARE PROPOSED, NEW BOUNDARY WALLS ARE TO MATCH THE EXISTING UNLESS OTHERWISE DETERMINED IN CONSULTATION WITH THE LANDOWNER.

0 5.0 10.0 20.0 30.0 40.0 50.0m
SCALE 1:500 @ A1; 1:1000 @ A3



Disclaimer

a. © National Transport Authority (NTA) 2022. This drawing is confidential and the copyright in it is owned by NTA. This drawing must not be either loaned, copied or otherwise reproduced in whole or in part or used for any purpose without the prior permission of NTA.

b. This drawing is to be used for the design element identified in the titlebox. Other information shown is to be considered indicative only. The drawing is to be read in conjunction with all other relevant design drawings.

c. O.S. data used for plans are printed under © Ordnance Survey Ireland Government of Ireland. All rights reserved. Licence Number 2022/OSI_NMA_180 National Transport Authority. All elevations are in metres and relate to OSI Geoid Model (OSGM15) Mean Head. All Co-ordinates are in Irish Transverse Mercator Grid (ITM) as defined by OSI active local GPS station.

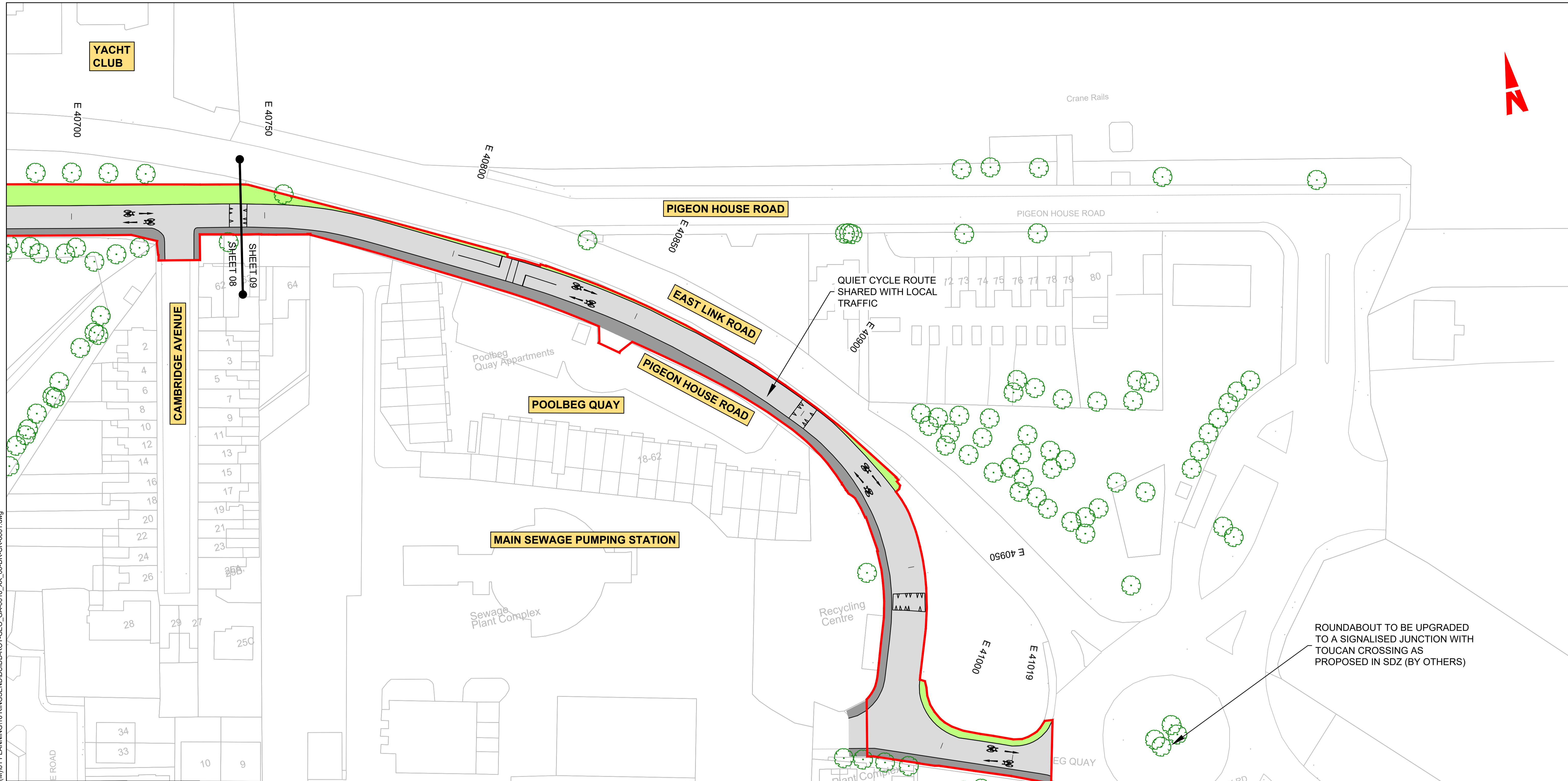
d. Information concerning the position of apparatus shown on this drawing is based on drawings supplied by the utility owners and/or the utility works contractor, whilst every care has been taken in the preparation of this drawing, positions should be taken as approximate and are intended for general guidance only and no representation is made by the NTA as to the accuracy, completeness, sufficiency or otherwise of this drawing and the position of the apparatus. The information contained herein does not purport to be comprehensive or final as the apparatus is subject to being altered and/or superseded. Recipients should not rely on this information. Any liabilities are hereby expressly disclaimed.

e. The information contained herein has been provided by the NTA but does not purport to be comprehensive or final. Recipients should not rely on the information. Neither the NTA nor any of its directors, officers, employees, agents, stakeholders or advisers make any representation or warranty as to, or accept any liability or responsibility in relation to, the adequacy, accuracy, reasonableness or completeness of the information provided as part of this document or any matter on which the information is based (including but not limited to loss or damage arising as a result of reliance by recipients on the information or any part of it). Any liabilities are hereby expressly disclaimed.

	Rev	Date	Drn	Chk'd	App'd	Description
	M01	MAR 2023	CG	EOC	SMG	ISSUE FOR PHASE 4: PLANNING

NTA Údarás Náisiúnta Iompair National Transport Authority		Engineering Designer 		
Date	Scale	Drawn	Checked	Approved
MAR 2023	1:500 @ A1 1:1,000 @ A3	CG	EOC	SMG
Programme Code	Originator Code	QMS Code		
BCIDD	ROT			

Programme Title BUSCONNECTS DUBLIN CORE BUS CORRIDORS INFRASTRUCTURE WORKS			
Drawing Title RINGSEND TO CITY CENTRE CORE BUS CORRIDOR SCHEME GENERAL ARRANGEMENT			
Drawing File Name	Sheet Number	Status	Rev
BCIDD-ROT-GEO_GA-0016_XX_00-DR-CR-0008	08 of 12	A	M01



LEGEND:

- BUS LANE
- CYCLE TRACK
- FOOTPATH
- CARRIAGEWAY
- GRASS AREA / VERGE
- PEDESTRIAN PRIORITY ZONE
- RAISED TABLE
- BUS STOP LOCATIONS
- BUS SHELTER
- TREE (EXISTING AND PROPOSED)
- HERITAGE FEATURES
- SITE BOUNDARY LINE
- TEMPORARY LAND ACQUISITION

0 5.0 10.0 20.0 30.0 40.0 50.0m

SCALE 1:500 @ A1; 1:1000 @ A3

NOTES:

- ADDITIONAL PROPOSED SCHEME INFORMATION IS AVAILABLE ON THE DRAWING SERIES PROVIDED WITHIN VOLUME III OF THE ENVIRONMENTAL IMPACT ASSESSMENT REPORT (EIAR).
- WHERE PROPERTY LINE ADJUSTMENTS ARE PROPOSED, NEW BOUNDARY WALLS ARE TO MATCH THE EXISTING UNLESS OTHERWISE DETERMINED IN CONSULTATION WITH THE LANDOWNER.

Disclaimer
 a. © National Transport Authority (NTA) 2022. This drawing is confidential and the copyright in it is owned by NTA. This drawing must not be either loaned, copied or otherwise reproduced in whole or in part or used for any purpose without the prior permission of NTA.
 b. This drawing is to be used for the design element identified in the titlebox. Other information shown is to be considered indicative only. The drawing is to be read in conjunction with all other relevant design drawings.
 c. O.S. data used for plans are printed under © Ordnance Survey Ireland Government of Ireland. All rights reserved. Licence Number 2022/OSI_NMA_180 National Transport Authority. All elevations are in metres and relate to OSI Geoid Model (OSGM15) Mean Head. All Co-ordinates are in Irish

Transverse Mercator Grid (ITM) as defined by OSI active local GPS station.
 d. Information concerning the position of apparatus shown on this drawing is based on drawings supplied by the utility owners and/or the utility works contractor, whilst every care has been taken in the preparation of this drawing, positions should be taken as approximate and are intended for general guidance only and no representation is made by the NTA as to the accuracy, completeness, sufficiency or otherwise of this drawing and the position of the apparatus. The information contained herein does not purport to be comprehensive or final as the apparatus is subject to being altered and/or superceded. Recipients should not rely on this information. Any liabilities are hereby expressly disclaimed.

Rev	Date	Drm	Chk'd	App'd	Description
M01	MAR 2023	CG	EOC	SMG	ISSUE FOR PHASE 4: PLANNING

Client


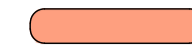











Engineering Designer		
Drawn	Checked	Approved
CG	EOC	SMG

Programme Title			
BUSCONNECTS DUBLIN			
CORE BUS CORRIDORS INFRASTRUCTURE WORKS			
Drawing Title			
RINGSEND TO CITY CENTRE CORE BUS CORRIDOR SCHEME			
GENERAL ARRANGEMENT			
Drawing File Name		Sheet Number	Status
BCIDD-ROT-GEO_GA-0016_XX_00-DR-CR-0009		09 of 12	A
Rev		M01	

DO NOT SCALE USE FIGURED DIMENSIONS ONLY

\\nodub\p1\2019\1917\1917-02_WIP\08 MODELS\01 CAD\01 DWG\03 STG 3 - STATUTORY PROCESS (M)\01 PLANNING\16 RINGSEND\BCIDD-ROT-GEO_GA-0016_XX_00-DR-CR-0001.dwg

LEGEND:

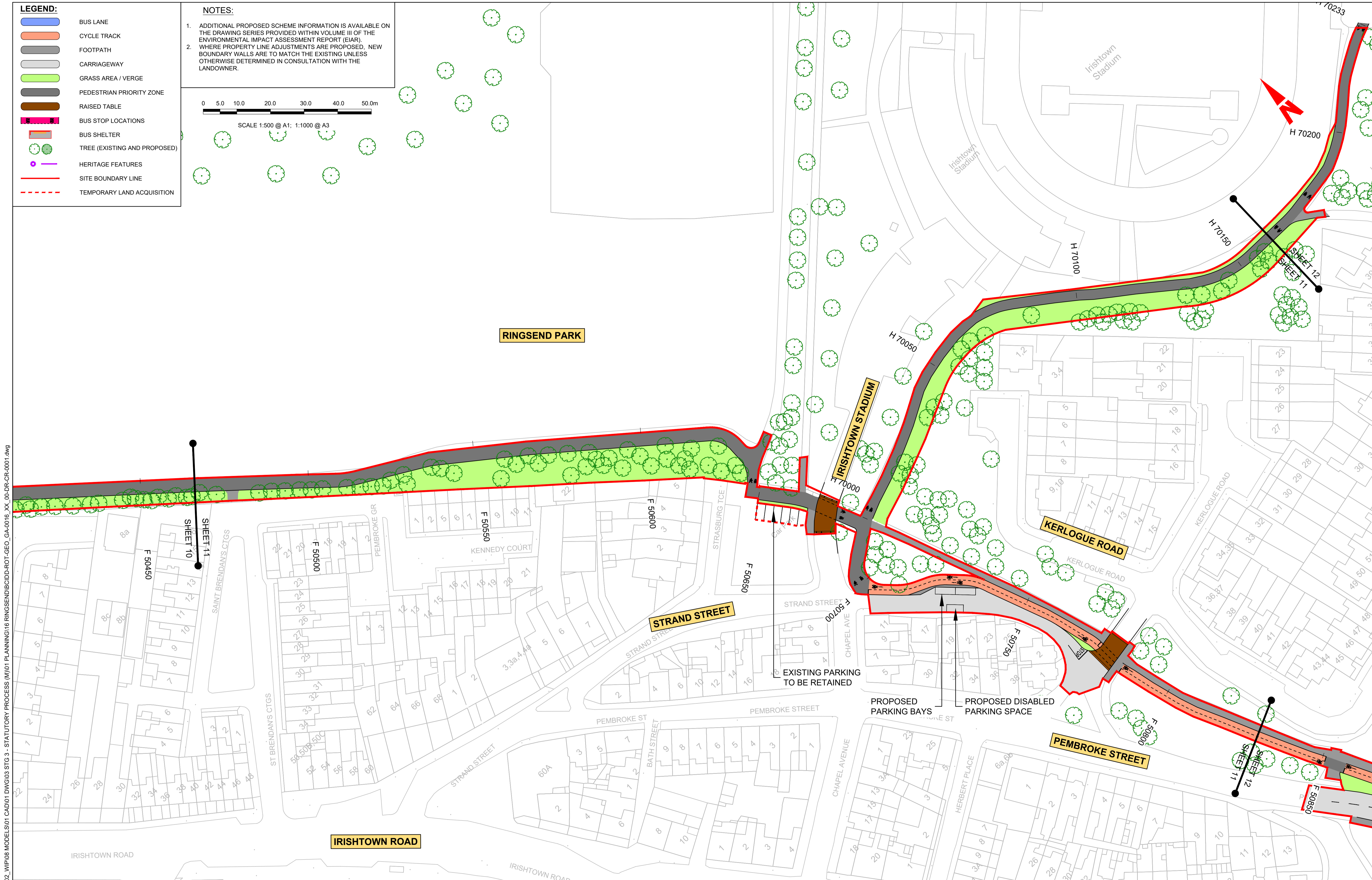
-  BUS LANE
-  CYCLE TRACK
-  FOOTPATH
-  CARRIAGEWAY
-  GRASS AREA / VERGE
-  PEDESTRIAN PRIORITY ZONE
-  RAISED TABLE
-  BUS STOP LOCATIONS
-  BUS SHELTER
-  TREE (EXISTING AND PROPOSED)
-  HERITAGE FEATURES
-  SITE BOUNDARY LINE
-  TEMPORARY LAND ACQUISITION

NOTES:

1. ADDITIONAL PROPOSED SCHEME INFORMATION IS AVAILABLE ON THE DRAWING SERIES PROVIDED WITHIN VOLUME III OF THE ENVIRONMENTAL IMPACT ASSESSMENT REPORT (EIAR).
2. WHERE PROPERTY LINE ADJUSTMENTS ARE PROPOSED, NEW BOUNDARY WALLS ARE TO MATCH THE EXISTING UNLESS OTHERWISE DETERMINED IN CONSULTATION WITH THE LANDOWNER.

0 5.0 10.0 20.0 30.0 40.0 50.0m

SCALE 1:500 @ A1; 1:1000 @ A3



Disclaimer

a. © National Transport Authority (NTA) 2022. This drawing is confidential and the copyright in it is owned by NTA. This drawing must not be either loaned, copied or otherwise reproduced in whole or in part or used for any purpose without the prior permission of NTA.

b. This drawing is to be used for the design element identified in the titlebox. Other information shown is to be considered indicative only. The drawing is to be read in conjunction with all other relevant design drawings.

c. O.S. data used for plans are printed under © Ordnance Survey Ireland Government of Ireland. All rights reserved. Licence Number 2022/OSI_NMA_180 National Transport Authority. All elevations are in metres and relate to OSI Geoid Model (OSGM15) Mean Head. All Co-ordinates are in Irish Transverse Mercator Grid (ITM) as defined by OSI active local GPS station.

d. Information concerning the position of apparatus shown on this drawing is based on drawings supplied by the utility owners and/or the utility works contractor, whilst every care has been taken in the preparation of this drawing, positions should be taken as approximate and are intended for general guidance only and no representation is made by the NTA as to the accuracy, completeness, sufficiency or otherwise of this drawing and the position of the apparatus. The information contained herein does not purport to be comprehensive or final as the apparatus is subject to being altered and/or superceded. Recipients should not rely on this information. Any liabilities are hereby expressly disclaimed.

e. The information contained herein has been provided by the NTA but does not purport to be comprehensive or final. Recipients should not rely on the information. Neither the NTA nor any of its directors, officers, employees, agents, stakeholders or advisers make any representation or warranty as to, or accept any liability or responsibility in relation to, the adequacy, accuracy, reasonableness or completeness of the information provided as part of this document or any matter on which the information is based (including but not limited to loss or damage arising as a result of reliance by recipients on the information or any part of it). Any liabilities are hereby expressly disclaimed.

Rev	Date	Drn	Chk'd	App'd	Description
M01	MAR 2023	CG	EOC	SMG	ISSUE FOR PHASE 4: PLANNING

Client: **NTA**
Udarás Náisiúnta Iompair
National Transport Authority

Engineering Designer: **CIROD**
TYPSA

Date: MAR 2023
Scale: 1:500 @ A1
1:1,000 @ A3

Drawn: CG
Checked: EOC
Approved: SMG

Programme Code: BCIDD
Originator Code: ROT
QMS Code:

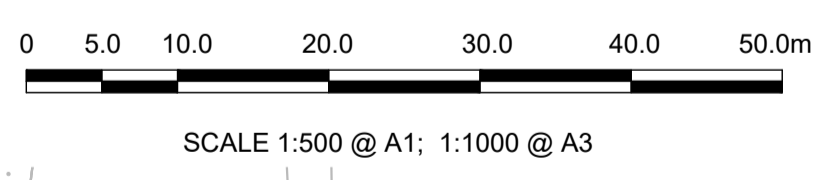
Programme Title: BUSCONNECTS DUBLIN			
CORE BUS CORRIDORS INFRASTRUCTURE WORKS			
Drawing Title: RINGSEND TO CITY CENTRE CORE BUS CORRIDOR SCHEME GENERAL ARRANGEMENT			
Drawing File Name: BCIDD-ROT-GEO_GA-0016_XX_00-DR-CR-0011	Sheet Number: 11 of 12	Status: A	Rev: M01

DO NOT SCALE USE FIGURED DIMENSIONS ONLY

\\wddubp1j02019191717117-02_WIP08 MODELS01 CAD01 DWG003 STG 3 - STATUTORY PROCESS (M)01 PLANNING16 RINGSEND\BCIDD-ROT-GEO_GA-0016_XX_00-DR-CR-0001.dwg



- LEGEND:**
- BUS LANE
 - CYCLE TRACK
 - FOOTPATH
 - CARRIAGEWAY
 - GRASS AREA / VERGE
 - PEDESTRIAN PRIORITY ZONE
 - RAISED TABLE
 - BUS STOP LOCATIONS
 - BUS SHELTER
 - TREE (EXISTING AND PROPOSED)
 - HERITAGE FEATURES
 - SITE BOUNDARY LINE
 - TEMPORARY LAND ACQUISITION



- NOTES:**
1. ADDITIONAL PROPOSED SCHEME INFORMATION IS AVAILABLE ON THE DRAWING SERIES PROVIDED WITHIN VOLUME III OF THE ENVIRONMENTAL IMPACT ASSESSMENT REPORT (EIAR).
 2. WHERE PROPERTY LINE ADJUSTMENTS ARE PROPOSED, NEW BOUNDARY WALLS ARE TO MATCH THE EXISTING UNLESS OTHERWISE DETERMINED IN CONSULTATION WITH THE LANDOWNER.

\\wddubp1u2019191717117-02_WIP08 MODELS01 CAD01 DWG03 STG 3 - STATUTORY PROCESS (M)01 PLANNING16 RINGSEND/BCIDD-ROT-GEO_GA-0016_XX_00-DR-CR-0001.dwg

Disclaimer:

a. © National Transport Authority (NTA) 2022. This drawing is confidential and the copyright in it is owned by NTA. This drawing must not be either loaned, copied or otherwise reproduced in whole or in part or used for any purpose without the prior permission of NTA.

b. This drawing is to be used for the design element identified in the titleblock. Other information shown is to be considered indicative only. The drawing is to be read in conjunction with all other relevant design drawings.

c. O.S. data used for plans are printed under © Ordnance Survey Ireland Government of Ireland. All rights reserved. Licence Number 2022/OSI_NMA_180 National Transport Authority. All elevations are in metres and relate to OSI Geoid Model (OSGM15) Mean Head. All Co-ordinates are in Irish Transverse Mercator Grid (ITM) as defined by OSI active local GPS station.

d. Information concerning the position of apparatus shown on this drawing is based on drawings supplied by the utility owners and/or the utility works contractor, whilst every care has been taken in the preparation of this drawing, positions should be taken as approximate and are intended for general guidance only and no representation is made by the NTA as to the accuracy, completeness, sufficiency or otherwise of this information. The information contained herein does not purport to be comprehensive or final as the apparatus is subject to being altered and/or superseded. Recipients should not rely on this information. Any liabilities are hereby expressly disclaimed.

e. The information contained herein has been provided by the NTA but does not purport to be comprehensive or final. Recipients should not rely on the information. Neither the NTA nor any of its directors, officers, employees, agents, stakeholders or advisers make any representation or warranty as to, or accept any liability or responsibility in relation to, the adequacy, accuracy, reasonableness or completeness of the information provided as part of this document or any matter on which the information is based (including but not limited to loss or damage arising as a result of reliance by recipients on the information or any part of it). Any liabilities are hereby expressly disclaimed.



Rev	Date	Drn	Chk'd	App'd	Description
M01	MAR 2023	CG	EOC	SMG	ISSUE FOR PHASE 4: PLANNING

Client NTA Udarás Náisiúnta Iompair National Transport Authority		Engineering Designer CIROD TYPSA		
Date MAR 2023	Scale 1:500 @ A1 1:1,000 @ A3	Drawn CG	Checked EOC	Approved SMG
Programme Code BCIDD	Originator Code ROT	QMS Code		

Programme Title BUSCONNECTS DUBLIN CORE BUS CORRIDORS INFRASTRUCTURE WORKS			
Drawing Title RINGSEND TO CITY CENTRE CORE BUS CORRIDOR SCHEME GENERAL ARRANGEMENT			
Drawing File Name BCIDD-ROT-GEO_GA-0016_XX_00-DR-CR-0012	Sheet Number 12 of 12	Status A	Rev M01

DO NOT SCALE USE FIGURED DIMENSIONS ONLY